



CORRECTIVE SERVICES

AUSTRALIA

EMBARGO: 11.30AM (CANBERRA TIME) THURS 13 SEP 2012

CONTENTS

	<i>page</i>
Notes	2
Summary of findings	3

TABLES

1 Persons in corrective services, summary	10
2 Persons in full-time custody	12
3 Imprisonment rates	13
4 Persons in full-time custody, by sex	14
5 Imprisonment rates, by sex	15
6 Persons in full-time custody, by type of custody	16
7 Imprisonment rates, by type of custody	17
8 Persons in full-time custody, by legal status	18
9 Imprisonment rates, by legal status	19
10 Sentenced prisoner receptions into full-time custody	20
11 Persons in periodic detention, by sex	21
12 Federal sentenced persons in full-time custody, by sex	22
13 Aboriginal and Torres Strait Islander persons in full-time custody, by sex ..	23
14 Aboriginal and Torres Strait Islander imprisonment rates, by sex	24
15 Aboriginal and Torres Strait Islander persons in full-time custody, by legal status	25
16 Aboriginal and Torres Strait Islander imprisonment rates, by legal status ..	26
17 Persons in community-based corrections, by sex	27
18 Community-based corrections rates, by sex	28
19 Persons in community-based corrections, by type of order	29
20 Persons in community-based corrections, by Aboriginal and Torres Strait Islander status	31
21 Proportion of persons in community-based corrections, by Aboriginal and Torres Strait Islander status	33

ADDITIONAL INFORMATION

Explanatory Notes	34
Glossary	41

INQUIRIES

For further information about these and related statistics, contact the National Information and Referral Service on 1300 135 070.

NOTES

FORTHCOMING ISSUES

<i>ISSUE (Quarter)</i>	<i>RELEASE DATE</i>
September 2012	22 November 2012
December 2012	14 March 2013



ABOUT THIS PUBLICATION

This publication presents information on persons in custody and persons serving community-based corrections orders under the authority of corrective services agencies. The statistics are derived from information provided to the Australian Bureau of Statistics (ABS) from administrative records held by corrective services agencies in each state and territory, and from the Australian Government Attorney-General's Department for details on federal prisoners. Details are provided for each state and territory on: prisoner numbers and imprisonment rates by type of custody; prisoner numbers by legal status for all prisoners and for Aboriginal and Torres Strait Islander prisoners; the number of sentenced receptions into custody; the number of federal prisoners; the numbers and rates of persons serving community-based corrections orders; and data on the Aboriginal and Torres Strait Islander status of persons in community-based corrections.

The ABS acknowledges the valuable contribution of the Board of Management and the Advisory Group of the National Corrective Services Statistics Unit as well as the staff of the various agencies that provide the statistics that are presented in this publication.

FURTHER INFORMATION

More information about ABS activities in the field of crime and justice statistics is available from the Crime and Justice theme page on the ABS website <www.abs.gov.au>. Details of other ABS publications relating to Crime and Justice statistics can be found in paragraphs 39–40 of the Explanatory Notes.



ABBREVIATIONS

ABS	Australian Bureau of Statistics
ACT	Australian Capital Territory
Aust.	Australia
ERP	estimated resident population
NCCJS	National Centre for Crime and Justice Statistics, Australian Bureau of Statistics
NSW	New South Wales
NT	Northern Territory
Qld	Queensland
SA	South Australia
Tas.	Tasmania
Vic.	Victoria
WA	Western Australia

Brian Pink
Australian Statistician

SUMMARY OF FINDINGS

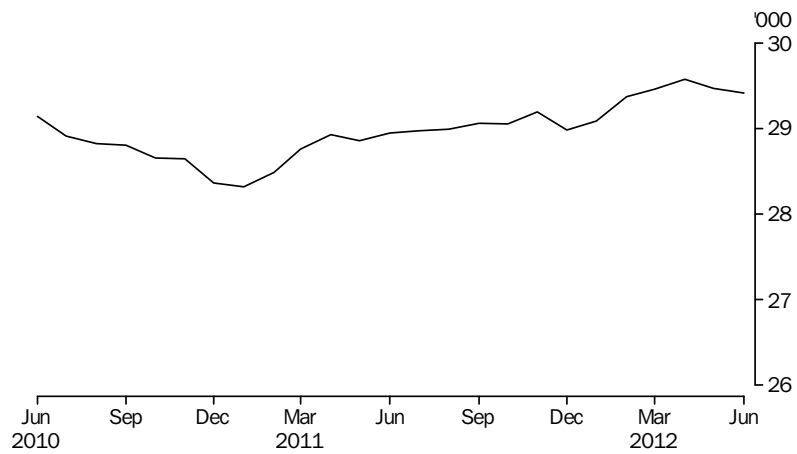
PERSONS IN CORRECTIVE SERVICES

Based on first day of the month averages, for the June quarter 2012 there were 29,557 persons in full-time custody and 54,244 persons in community-based corrections. This comprises an increase of 593 persons (2%) in full-time custody from the June quarter 2011, and a decrease of 365 persons (1%) in community-based corrections for the same period. This represents an increase of 228 persons (less than 1%) in corrective services from the June quarter 2011.

Number of prisoners

During the June quarter 2012, the average daily number of full-time prisoners in Australia was 29,482 persons. This was an increase of 179 persons (1%) from the March quarter 2012.

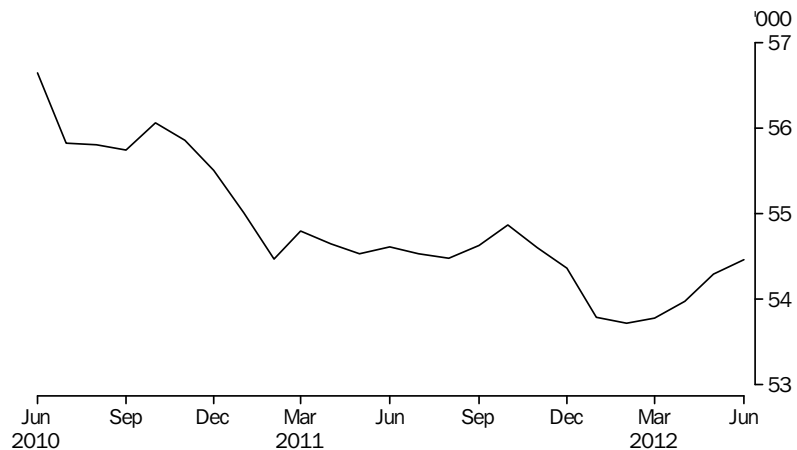
PERSONS IN PRISON CUSTODY, Average daily number per month



Number of persons in community-based corrections

Community-based corrections orders are non-custodial orders served under the authority of adult corrective services agencies and include restricted movement, reparations (fine options and community service) and supervision orders (parole, bail, and sentenced probation). In the June quarter 2012, there were 54,244 persons in community-based corrections in Australia based on first day of the month averages, an increase of 481 persons (1%) from the March quarter 2012.

PERSONS IN COMMUNITY-BASED CORRECTIONS, Average number on the first day of the month



SUMMARY OF FINDINGS *continued*

PERSONS IN CUSTODY

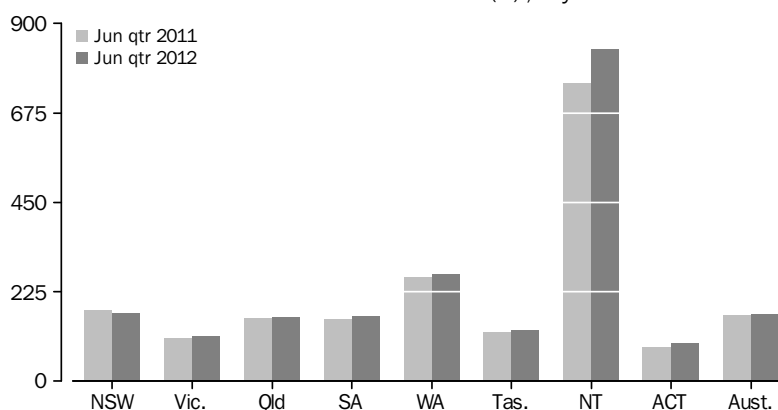
Rates per 100,000 adults

Nationally, the June quarter 2012 average daily imprisonment rate was 169 prisoners per 100,000 adult population, an increase of 2% from the June quarter 2011. The Northern Territory had the highest imprisonment rate (835 prisoners per 100,000 adult population), followed by Western Australia (269) and New South Wales (173).

The Australian Capital Territory and Victoria had the lowest imprisonment rates (96 and 113 prisoners per 100,000 adult population respectively).

The Northern Territory and the Australian Capital Territory recorded the largest proportional increases in imprisonment rates from the June quarter 2011 (12% and 11% respectively). The only proportional decrease over the same period was recorded in New South Wales (3%).

AVERAGE DAILY IMPRISONMENT RATE(a), By states and territories



(a) Rate per 100,000 adult population.

Sex

Of the average daily number of full-time prisoners in Australia in the June quarter 2012, 27,336 (93%) were male and 2,146 (7%) were female. The average daily imprisonment rate for males was 318 prisoners per 100,000 adult male population; 13 times more than the rate for females (24 female prisoners per 100,000 adult female population).

Type of full-time custody

The average daily number of prisoners in secure prison custody in the June quarter 2012 was 22,917 (78% of prisoners in full-time custody). Open prison custody comprised 6,566 prisoners (22%).

The Australian Capital Territory had the highest proportion of prisoners in secure custody (96%), followed by Tasmania (93%), Queensland and South Australia (both 90%).

Legal status

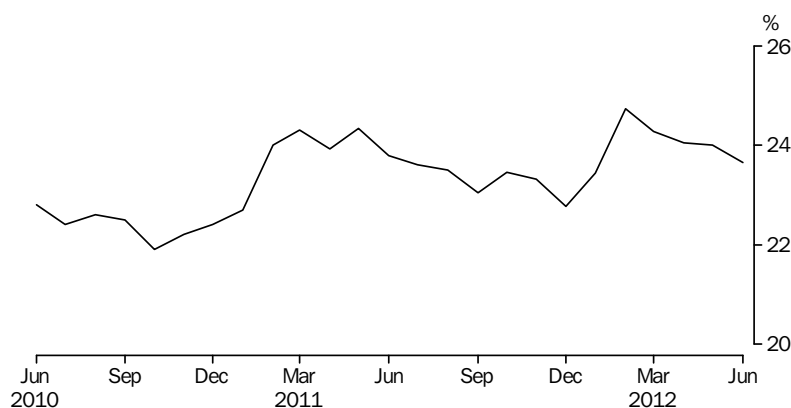
The average number of prisoners in full-time custody on the first day of each month in the June quarter 2012 was 29,557, comprising an average of 22,493 (76%) sentenced and 7,064 (24%) unsentenced prisoners. Sentenced prisoners increased by 1% from the previous quarter and increased by 2% from the June quarter 2011.

Unsentenced prisoners increased by less than 1% (7) from the March quarter 2012 and increased by 2% (108) from the June quarter 2011. The Australian Capital Territory and South Australia had the highest proportions of unsentenced prisoners (34% and 32% respectively). The lowest proportions of unsentenced prisoners were recorded in Victoria, Western Australia and Tasmania (all 20%).

SUMMARY OF FINDINGS *continued*

Legal status continued

PROPORTION OF UNSENTENCED PERSONS IN PRISON CUSTODY (a), Per month



(a) Based on average number on the first day of the month

Sentenced prisoner receptions

There were 8,196 sentenced prisoner receptions into full-time custody in Australia in the June quarter 2012; an increase of 1% (47) from the March quarter 2012 and an increase of 12% (855) from the June quarter 2011.

Periodic detention

Periodic detention is a form of custody or order where a sentenced prisoner is required to be held in custody on a part-time basis. This type of custody order is currently only used in New South Wales and the Australian Capital Territory. This program has ceased in New South Wales from October 2010, but some prisoners are still undertaking pre-existing sentences.

During the June quarter 2012 there was an average daily number of 22 persons in New South Wales and 52 persons in the Australian Capital Territory held in periodic detention. The rate of imprisonment for periodic detainees decreased by 56% in New South Wales from the March quarter 2012 (from 0.9 to 0.4 per 100,000 adult population), and decreased by 16% in the Australian Capital Territory (from 21 to 18 per 100,000 adult population).

Federal prisoners

In the June quarter 2012, there were 967 federal sentenced prisoners in Australia based on first day of the month figures, an increase of 11% from the June quarter 2011 and an increase of 2% from the March quarter 2012. Just under half (449) of the federal prisoners were sentenced in New South Wales.

The two states with the largest increase in numbers over the twelve months to the June quarter 2012 were New South Wales 34 persons (8%) and Queensland 33 persons (31%).

Aboriginal and Torres Strait Islander prisoners

The average daily number of full-time Aboriginal and Torres Strait Islander adult prisoners in Australia in the June quarter 2012 was 7,946, comprising 7,223 (91%) males and 723 (9%) females. Aboriginal and Torres Strait Islander males in custody increased 3% (226 persons) and females 16% (99 persons) from the June quarter 2011. Aboriginal and Torres Strait Islander prisoners represented 27% of the total full-time prisoner population in the June quarter 2012, the same proportion as for the March quarter 2012. The total Aboriginal and Torres Strait Islander population aged 18 years and over at 30 June 2011 was 2% of the Australian population.

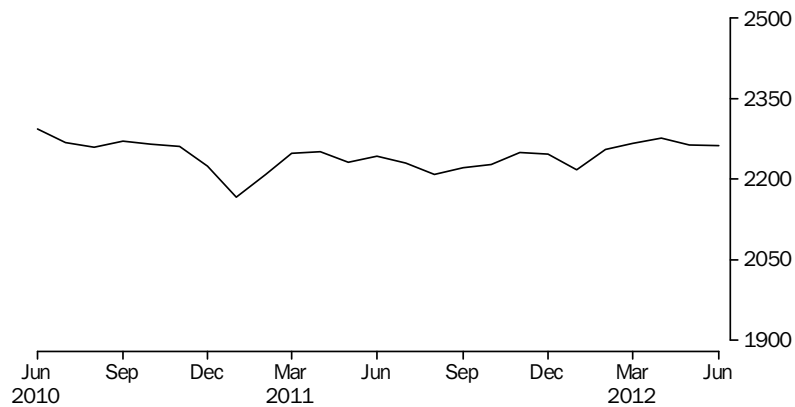
SUMMARY OF FINDINGS *continued*

Aboriginal and Torres Strait Islander prisoners *continued*

Three states accounted for approximately 73% of the total Aboriginal and Torres Strait Islander prisoner population: New South Wales (2,172), Western Australia (1,965) and Queensland (1,668).

The national average daily Aboriginal and Torres Strait Islander imprisonment rate in the June quarter 2012 was 2,268 per 100,000 adult Aboriginal and Torres Strait Islander population, an increase of 1% from the previous quarter and an increase of 1% from the June quarter 2011.

AVERAGE DAILY ABORIGINAL AND TORRES STRAIT ISLANDER IMPRISONMENT RATE (a), Per month



(a) Rate per 100,000 adult Aboriginal and Torres Strait Islander population.

The imprisonment rate for males increased from the June quarter 2011 by less than 1% to 4,211 per 100,000 adult male Aboriginal and Torres Strait Islander population. The imprisonment rate for females increased 13% to 405 females per 100,000 adult female Aboriginal and Torres Strait Islander population over the same period. The imprisonment rate for males is more than 10 times the rate for females.

Different age profiles of the Aboriginal and Torres Strait Islander and non-Indigenous population can affect imprisonment rate numbers. While this quarterly statistical collection is unable to take age into account, data from the Prisoner Census collection can provide this level of detail.

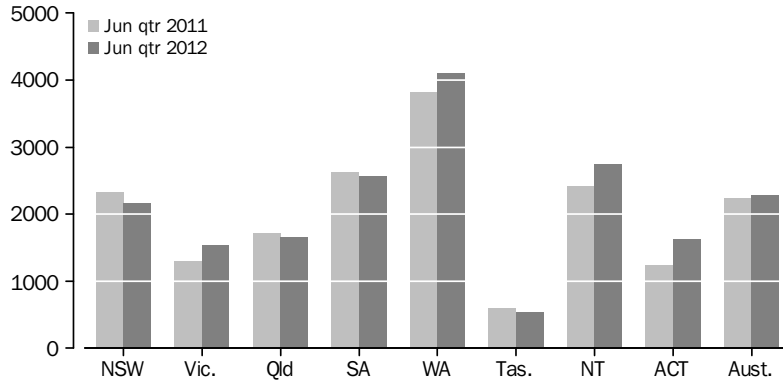
The national age standardised Aboriginal and Torres Strait Islander imprisonment rate from the annual Prisoner Census conducted at June 2011 was 14 times higher (1,868 per 100,000 adult Aboriginal and Torres Strait Islander population) than the rate for non-Indigenous persons (130 per 100,000 adult non-Indigenous population). Further information on the comparison of imprisonment rates between Aboriginal and Torres Strait Islander and non-Indigenous populations can be found in *Prisoners in Australia, 2011* (cat. no. 4517.0).

The highest Aboriginal and Torres Strait Islander imprisonment rate was recorded in Western Australia (4,105 Aboriginal and Torres Strait Islander prisoners per 100,000 adult Aboriginal and Torres Strait Islander population), followed by the Northern Territory (2,741) and South Australia (2,566). The lowest Aboriginal and Torres Strait Islander imprisonment rate was recorded in Tasmania (538), followed by Victoria (1,523).

SUMMARY OF FINDINGS *continued*

Aboriginal and Torres
Strait Islander prisoners
continued

AVERAGE DAILY ABORIGINAL AND TORRES STRAIT ISLANDER IMPRISONMENT RATE(a), By states and territories



(a) Rate per 100,000 adult Aboriginal and Torres Strait Islander population.

The largest proportional increase in the Aboriginal and Torres Strait Islander imprisonment rate from the June quarter 2011 was recorded in the Australian Capital Territory (31%), followed by Victoria (18%). The largest proportional decreases over the same period were recorded in Tasmania (9%) and New South Wales (7%).

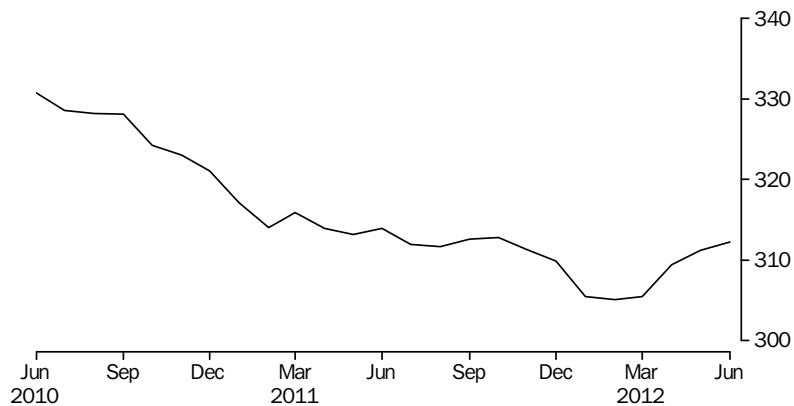
Of the full-time Aboriginal and Torres Strait Islander prisoner population 75% (6,012) were sentenced and 25% (1,958) unsentenced in the June quarter 2012. Unsentenced Aboriginal and Torres Strait Islander prisoners increased 1% (26) from the March quarter 2012, and 5% (89) from the June quarter 2011. Sentenced Aboriginal and Torres Strait Islander prisoners increased 2% (122) from the March quarter 2012, and 4% (239) from the June quarter 2011.

PERSONS IN COMMUNITY-BASED CORRECTIONS

Rates per 100,000 adults

Nationally, the rate of persons in community-based corrections was 311 persons per 100,000 adult population for the June quarter 2012 based on first day of the month figures. This was a decrease of 1% from the June quarter 2011 (314 persons per 100,000 adults). The largest decreases from the June quarter 2011 were recorded in Western Australia (12%) and the Australian Capital Territory (11%), whilst the largest increase was recorded in Tasmania (11%).

COMMUNITY-BASED CORRECTIONS RATE(a), Per month

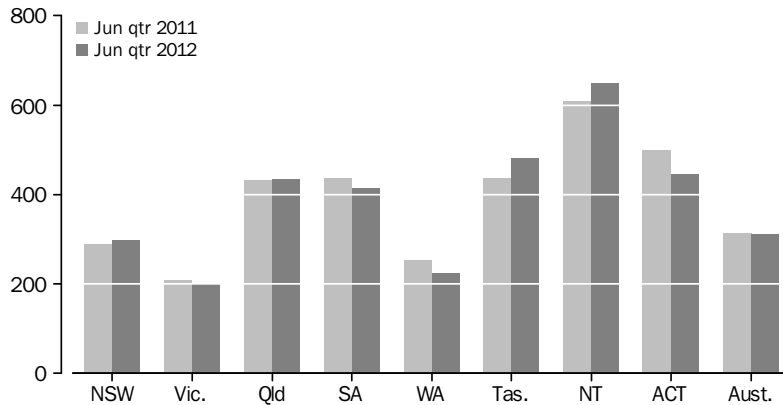


(a) Rate per 100,000 adult population, based on average number on the first day of the month

SUMMARY OF FINDINGS *continued*

Rates per 100,000 adults
continued

COMMUNITY-BASED CORRECTIONS RATE(a), By states and territories



(a) Rate per 100,000 adult population, based on average number on the first day of the month

Sex

Based on first day of the month averages, there were 54,244 persons in community-based corrections in Australia in the June quarter 2012, of these 44,396 (82%) were male and 9,802 (18%) were female.

In the June quarter 2012, the rate of community-based corrections for males was 517 per 100,000 adult male population compared to 111 females per 100,000 adult female population. The community-based corrections rate for males was more than four times that of females.

Type of orders

In the June quarter 2012 there were 8,578 persons serving community service orders, a decrease of 718 persons (8%) from the June quarter 2011. The largest decreases in numbers over this period were recorded in New South Wales (357 persons or 11%), Queensland (252 persons or 12%) and South Australia (204 persons or 18%). The largest increase was recorded in Tasmania (224 persons or 24%).

There were 12,461 persons on parole in the June quarter 2012, an increase of 437 persons (4%) from the June quarter 2011. The largest increases in numbers over this period were recorded in Queensland (336 persons or 8%), Victoria (107 persons or 7%) and New South Wales (98 persons or 2%). These three states accounted for approximately 87% of persons serving parole orders. The largest decreases in parole orders from the June quarter 2011 were recorded in Western Australia (72 persons or 16%) and South Australia (38 persons or 4%).

Aboriginal and Torres
Strait Islanders in
community-based
corrections

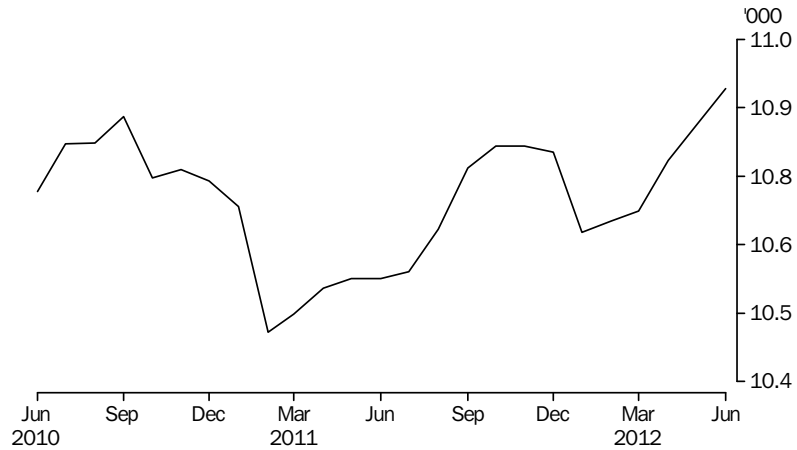
Based on first day of the month averages, the number of Aboriginal and Torres Strait Islanders in community-based corrections for the June quarter was 10,850; an increase of 2% (169 persons) from the previous quarter. The largest proportional increase in the number of Aboriginal and Torres Strait Islanders in community-based corrections from the March quarter was recorded in Tasmania (11% or 25 persons) followed by the Northern Territory (4% or 33 persons). The largest proportional decreases were in the Australian Capital Territory (6% or 10 persons) and South Australia (3% or 30 persons). Aboriginal and Torres Strait Islanders represented 20% of the total number of persons in community-based corrections in the June quarter 2012.

SUMMARY OF FINDINGS *continued*

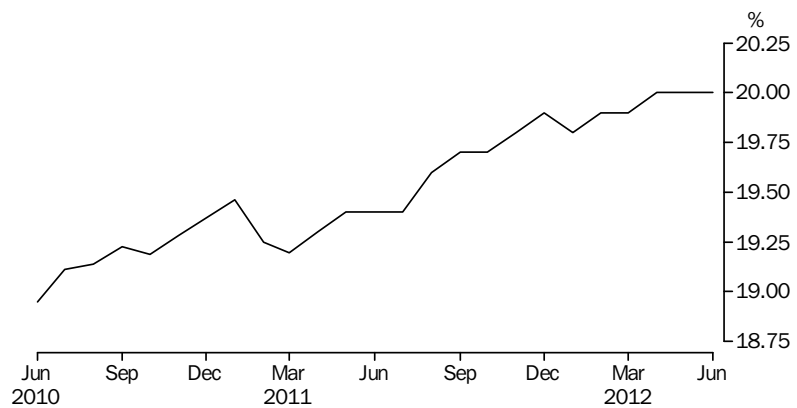
Aboriginal and Torres Strait Islanders in community-based corrections continued

Approximately 75% of the total Aboriginal and Torres Strait Islander community-based corrections population was located in three states: Queensland (3,434), New South Wales (3,329) and Western Australia (1,408).

ABORIGINAL AND TORRES STRAIT ISLANDERS IN COMMUNITY-BASED CORRECTIONS, Number on first day of month



ABORIGINAL AND TORRES STRAIT ISLANDERS, PROPORTION OF PERSONS IN COMMUNITY-BASED CORRECTIONS (a), Per month



(a) Based on average number on the first day of the month

PERSONS IN CORRECTIVE SERVICES, Summary(a)

	NSW	Vic.	Qld	SA	WA	Tas.	NT	ACT	Aust.
AVERAGE DAILY NUMBER									
Males in full-time custody									
Jun Qtr 11	9 359	4 337	5 141	1 885	4 289	445	1 192	229	26 877
Mar Qtr 12	9 037	4 504	5 203	1 979	4 469	472	1 312	264	27 240
Jun Qtr 12	9 028	4 563	5 173	1 973	4 524	472	1 336	267	27 336
Females in full-time custody									
Jun Qtr 11	698	320	421	119	358	42	59	15	2 032
Mar Qtr 12	655	320	446	131	393	35	70	12	2 063
Jun Qtr 12	655	333	464	134	426	37	86	11	2 146
Persons in full-time custody									
Jun Qtr 11	10 057	4 657	5 562	2 004	4 647	487	1 251	244	28 909
Mar Qtr 12	9 693	4 824	5 649	2 109	4 862	507	1 382	276	29 303
Jun Qtr 12	9 683	4 896	5 637	2 107	4 950	509	1 422	278	29 482
Aboriginal & Torres Strait Islander persons in full-time custody									
Jun Qtr 11	2 270	288	1 671	481	1 775	73	1 029	36	7 621
Mar Qtr 12	2 194	325	1 676	489	1 910	82	1 148	47	7 873
Jun Qtr 12	2 172	351	1 668	484	1 965	68	1 190	48	7 946
AVERAGE NUMBER ON FIRST DAY OF MONTH									
Unsentenced persons in full-time custody									
Jun Qtr 11	2 865	896	1 190	647	862	90	314	93	6 956
Mar Qtr 12	2 730	929	1 223	679	964	115	318	98	7 057
Jun Qtr 12	2 657	980	1 233	684	983	101	331	95	7 064
Sentenced persons in full-time custody									
Jun Qtr 11	7 253	3 746	4 380	1 359	3 802	387	935	146	22 008
Mar Qtr 12	6 987	3 863	4 401	1 429	3 872	391	1 058	168	22 169
Jun Qtr 12	7 064	3 914	4 413	1 447	3 972	411	1 092	180	22 493
Persons in full-time custody									
Jun Qtr 11	10 118	4 641	5 570	2 005	4 664	477	1 250	238	28 964
Mar Qtr 12	9 717	4 793	5 625	2 108	4 836	506	1 375	266	29 226
Jun Qtr 12	9 721	4 894	5 646	2 131	4 955	512	1 423	276	29 557
Males in community-based corrections(b)									
Jun Qtr 11	13 697	7 322	12 136	4 585	3 474	1 357	864	1 191	44 625
Mar Qtr 12	13 813	6 985	12 061	4 406	3 184	1 447	911	1 153	43 960
Jun Qtr 12	14 070	7 154	12 123	4 347	3 164	1 502	939	1 096	44 396
Females in community-based corrections(b)									
Jun Qtr 11	2 469	1 666	3 039	1 050	1 002	344	152	214	9 936
Mar Qtr 12	2 484	1 594	3 003	1 017	911	386	166	200	9 761
Jun Qtr 12	2 506	1 584	3 023	988	937	405	164	195	9 802
Persons in community-based corrections(b)(c)									
Jun Qtr 11	16 210	8 989	15 175	5 637	4 476	1 700	1 016	1 405	54 609
Mar Qtr 12	16 335	8 581	15 064	5 424	4 096	1 833	1 077	1 353	53 763
Jun Qtr 12	16 621	8 739	15 146	5 336	4 100	1 907	1 103	1 291	54 244

(a) For the calculation of quarterly figures – see Explanatory Notes, paragraph 5.

(b) Figures include persons with breached or suspended orders, with the exception of Vic. and Tas.

(c) Includes persons whose sex is unknown.

PERSONS IN CORRECTIVE SERVICES, Summary(a) *continued*

	NSW	Vic.	Qld	SA	WA	Tas.	NT	ACT	Aust.
PERCENTAGE CHANGE (AVERAGE DAILY NUMBER)									
Males in full-time custody									
Jun Qtr 11 to Jun Qtr 12	-3.5	5.2	0.6	4.7	5.5	6.1	12.1	16.6	1.7
Mar Qtr 12 to Jun Qtr 12	-0.1	1.3	-0.6	-0.3	1.2	—	1.8	1.1	0.4
Females in full-time custody									
Jun Qtr 11 to Jun Qtr 12	-6.2	4.1	10.2	12.6	19.0	-11.9	45.8	-26.7	5.6
Mar Qtr 12 to Jun Qtr 12	—	4.1	4.0	2.3	8.4	5.7	22.9	-8.3	4.0
Persons in full-time custody									
Jun Qtr 11 to Jun Qtr 12	-3.7	5.1	1.3	5.1	6.5	4.5	13.7	13.9	2.0
Mar Qtr 12 to Jun Qtr 12	-0.1	1.5	-0.2	-0.1	1.8	0.4	2.9	0.7	0.6
Aboriginal & Torres Strait Islander persons in full-time custody									
Jun Qtr 11 to Jun Qtr 12	-4.3	21.9	-0.2	0.6	10.7	-6.8	15.6	33.3	4.3
Mar Qtr 12 to Jun Qtr 12	-1.0	8.0	-0.5	-1.0	2.9	-17.1	3.7	2.1	0.9
PERCENTAGE CHANGE (AVERAGE NUMBER ON FIRST DAY OF MONTH)									
Unsentenced persons in full-time custody									
Jun Qtr 11 to Jun Qtr 12	-7.3	9.4	3.6	5.7	14.0	12.2	5.4	2.2	1.6
Mar Qtr 12 to Jun Qtr 12	-2.7	5.5	0.8	0.7	2.0	-12.2	4.1	-3.1	0.1
Sentenced persons in full-time custody									
Jun Qtr 11 to Jun Qtr 12	-2.6	4.5	0.8	6.5	4.5	6.2	16.8	23.3	2.2
Mar Qtr 12 to Jun Qtr 12	1.1	1.3	0.3	1.3	2.6	5.1	3.2	7.1	1.5
Persons in full-time custody									
Jun Qtr 11 to Jun Qtr 12	-3.9	5.5	1.4	6.3	6.2	7.3	13.8	16.0	2.0
Mar Qtr 12 to Jun Qtr 12	—	2.1	0.4	1.1	2.5	1.2	3.5	3.8	1.1
Males in community-based corrections^(b)									
Jun Qtr 11 to Jun Qtr 12	2.7	-2.3	-0.1	-5.2	-8.9	10.7	8.7	-8.0	-0.5
Mar Qtr 12 to Jun Qtr 12	1.9	2.4	0.5	-1.3	-0.6	3.8	3.1	-4.9	1.0
Females in community-based corrections^(b)									
Jun Qtr 11 to Jun Qtr 12	1.5	-4.9	-0.5	-5.9	-6.5	17.7	7.9	-8.9	-1.3
Mar Qtr 12 to Jun Qtr 12	0.9	-0.6	0.7	-2.9	2.9	4.9	-1.2	-2.5	0.4
Persons in community-based corrections^{(b)(c)}									
Jun Qtr 11 to Jun Qtr 12	2.5	-2.8	-0.2	-5.3	-8.4	12.2	8.6	-8.1	-0.7
Mar Qtr 12 to Jun Qtr 12	1.8	1.8	0.5	-1.6	0.1	4.0	2.4	-4.6	0.9

— nil or rounded to zero (including null cells)

(a) For the calculation of quarterly figures – see Explanatory Notes, paragraph 5.

(b) Figures include persons with breached or suspended orders, with the exception of Vic. and Tas.

(c) Includes persons whose sex is unknown.

PERSONS IN FULL-TIME CUSTODY

	NSW(a)	Vic.	Qld	SA	WA	Tas.	NT	ACT(b)	Aust. (c)
AVERAGE DAILY NUMBER									
2009	10 310	4 367	5 622	1 951	4 402	513	1 073	170	28 390
2010	10 255	4 553	5 624	1 961	4 734	480	1 113	212	28 932
2011	9 926	4 698	5 584	2 021	4 663	498	1 250	240	28 881
2011									
Jun Qtr	10 057	4 657	5 562	2 004	4 647	487	1 251	244	28 909
Sep Qtr	9 921	4 768	5 634	2 032	4 638	527	1 251	239	29 008
Dec Qtr	9 712	4 836	5 680	2 051	4 734	524	1 294	245	29 074
2012									
Mar Qtr	9 693	4 824	5 649	2 109	4 862	507	1 382	276	29 303
Jun Qtr	9 683	4 896	5 637	2 107	4 950	509	1 422	278	29 482
2011									
Apr	10 137	4 597	5 581	2 004	4 647	467	1 254	241	28 929
May	10 041	4 661	5 557	1 983	4 644	487	1 238	245	28 856
Jun	9 995	4 713	5 547	2 027	4 650	507	1 261	245	28 945
Jul	9 948	4 753	5 586	2 035	4 629	516	1 265	243	28 975
Aug	9 913	4 767	5 645	2 044	4 613	532	1 241	238	28 992
Sep	9 900	4 786	5 672	2 015	4 672	533	1 246	235	29 059
Oct	9 772	4 839	5 676	2 023	4 709	539	1 264	232	29 053
Nov	9 765	4 858	5 717	2 056	4 746	517	1 290	246	29 193
Dec	9 601	4 812	5 647	2 073	4 747	517	1 327	256	28 981
2012									
Jan	9 707	4 782	5 597	2 092	4 781	510	1 349	272	29 090
Feb	9 726	4 808	5 656	2 114	4 881	507	1 393	279	29 365
Mar	9 648	4 881	5 695	2 122	4 925	504	1 406	277	29 459
Apr	9 691	4 936	5 657	2 121	4 953	512	1 427	275	29 573
May	9 675	4 885	5 639	2 108	4 939	512	1 429	277	29 463
Jun	9 683	4 867	5 616	2 093	4 957	503	1 410	282	29 411

(a) Data prior to the September quarter 2009 includes ACT prisoners held in NSW prisons – see Explanatory Notes, paragraph 35.

(b) Data prior to the September quarter 2009 includes ACT prisoners held in ACT as well as ACT prisoners held in NSW – see Explanatory Notes, paragraph 35.

(c) For the period prior to the September quarter 2009, ACT Prisoners held in NSW prisons are included in both NSW and ACT figures. The sum of the state/territory columns will therefore be greater than the Australian total – see Explanatory Notes, paragraph 35.

IMPRISONMENT RATES (a)

	NSW(b)	Vic.	Qld	SA	WA	Tas.	NT	ACT(c)	Aust.
RATE PER 100,000 ADULT POPULATION									
2009	189.4	104.8	167.2	154.7	260.7	134.2	670.3	62.7	169.7
2010	184.2	106.3	162.4	153.0	271.8	123.9	673.2	76.5	168.5
2011	176.0	107.8	158.4	156.0	261.7	127.5	747.3	85.0	165.6
2011									
Jun Qtr	178.5	107.1	158.1	154.9	261.8	124.7	747.8	86.5	166.1
Sep Qtr	175.6	109.2	159.5	156.5	259.5	134.6	750.1	84.2	166.0
Dec Qtr	171.4	110.3	160.1	157.7	263.1	133.7	771.8	86.0	165.7
2012									
Mar Qtr	170.7	109.7	158.6	161.9	267.7	129.2	821.1	96.5	166.4
Jun Qtr	172.6	112.5	161.2	163.0	269.3	128.6	835.4	95.8	169.0
2011									
Apr	180.0	105.7	158.6	154.9	261.8	119.5	749.6	85.6	166.2
May	178.2	107.2	158.0	153.3	261.6	124.7	740.0	87.1	165.8
Jun	177.4	108.3	157.7	156.7	262.0	129.8	754.0	86.9	166.3
Jul	176.1	108.8	158.2	156.8	259.0	131.8	758.5	85.6	165.8
Aug	175.5	109.1	159.8	157.5	258.2	135.8	744.3	83.9	165.9
Sep	175.2	109.6	160.6	155.3	261.4	136.2	747.3	82.9	166.3
Oct	172.5	110.4	160.0	155.6	261.7	137.4	754.0	81.6	165.6
Nov	172.4	110.8	161.1	158.1	263.8	131.8	769.5	86.3	166.4
Dec	169.5	109.8	159.2	159.4	263.8	132.0	791.8	90.1	165.2
2012									
Jan	170.9	108.7	157.1	160.6	263.2	129.8	801.3	95.2	165.2
Feb	171.3	109.3	158.7	162.3	268.7	129.2	827.4	97.6	166.8
Mar	169.9	111.0	159.8	162.9	271.2	128.5	835.0	97.0	167.3
Apr	172.8	113.5	161.7	164.1	269.5	129.4	838.1	94.9	169.5
May	172.5	112.3	161.2	163.1	268.7	129.2	839.5	95.6	168.9
Jun	172.6	111.9	160.6	161.9	269.7	127.0	828.4	97.1	168.6

(a) Imprisonment rates are based on Estimated Resident Population counts – see Explanatory Notes, paragraphs 17–21.

(b) Excludes ACT prisoners that were held in NSW prisons prior to September quarter 2009 – see Explanatory Notes, paragraph 35.

(c) Includes ACT prisoners held in ACT as well as ACT prisoners that were held in NSW prior to the September quarter 2009 – see Explanatory Notes, paragraph 35.

PERSONS IN FULL-TIME CUSTODY(a), By sex

	NSW(b)	Vic.	Qld	SA	WA	Tas.	NT	ACT(c)	Aust. (d)
MALES (AVERAGE DAILY NUMBER)									
2009	9 537	4 081	5 199	1 823	4 055	475	1 026	155	26 336
2010	9 491	4 238	5 194	1 835	4 342	446	1 064	197	26 807
2011	9 240	4 377	5 158	1 895	4 303	461	1 192	228	26 852
2011									
Jun Qtr	9 359	4 337	5 141	1 885	4 289	445	1 192	229	26 877
Sep Qtr	9 226	4 444	5 196	1 900	4 295	487	1 192	225	26 966
Dec Qtr	9 063	4 507	5 239	1 920	4 366	486	1 236	237	27 054
2012									
Mar Qtr	9 037	4 504	5 203	1 979	4 469	472	1 312	264	27 240
Jun Qtr	9 028	4 563	5 173	1 973	4 524	472	1 336	267	27 336
Apr	9 039	4 609	5 194	1 986	4 531	480	1 334	263	27 437
May	9 022	4 553	5 175	1 974	4 514	475	1 346	266	27 326
Jun	9 023	4 527	5 150	1 960	4 527	460	1 328	270	27 245
FEMALES (AVERAGE DAILY NUMBER)									
2009	773	286	423	128	346	38	47	14	2 054
2010	764	315	431	125	392	34	49	15	2 125
2011	686	321	427	127	360	37	58	13	2 029
2011									
Jun Qtr	698	320	421	119	358	42	59	15	2 032
Sep Qtr	694	324	438	132	343	39	59	13	2 042
Dec Qtr	649	329	441	130	368	39	58	8	2 021
2012									
Mar Qtr	655	320	446	131	393	35	70	12	2 063
Jun Qtr	655	333	464	134	426	37	86	11	2 146
Apr	652	327	463	135	422	33	93	12	2 136
May	652	332	464	134	425	37	83	11	2 137
Jun	660	340	467	133	430	43	82	12	2 167
PERSONS (AVERAGE DAILY NUMBER)									
2009	10 310	4 367	5 622	1 951	4 402	513	1 073	170	28 390
2010	10 255	4 553	5 624	1 961	4 734	480	1 113	212	28 932
2011	9 926	4 698	5 584	2 021	4 663	498	1 250	240	28 881
2011									
Jun Qtr	10 057	4 657	5 562	2 004	4 647	487	1 251	244	28 909
Sep Qtr	9 921	4 768	5 634	2 032	4 638	527	1 251	239	29 008
Dec Qtr	9 712	4 836	5 680	2 051	4 734	524	1 294	245	29 074
2012									
Mar Qtr	9 693	4 824	5 649	2 109	4 862	507	1 382	276	29 303
Jun Qtr	9 683	4 896	5 637	2 107	4 950	509	1 422	278	29 482
Apr	9 691	4 936	5 657	2 121	4 953	512	1 427	275	29 573
May	9 675	4 885	5 639	2 108	4 939	512	1 429	277	29 463
Jun	9 683	4 867	5 616	2 093	4 957	503	1 410	282	29 411

(a) For the calculation of annual and quarterly figures – see Explanatory Notes, paragraph 5.

(b) Data prior to the September quarter 2009 includes ACT prisoners held in NSW prisons – see Explanatory Notes, paragraph 35.

(c) Data prior to the September quarter 2009 includes ACT prisoners held in ACT as well as ACT prisoners held in NSW – see Explanatory Notes, paragraph 35.

(d) For the period prior to the September quarter 2009, ACT Prisoners held in NSW prisons are included in both NSW and ACT figures. The sum of the state/territory columns will therefore be greater than the Australian total – see Explanatory Notes, paragraph 35.

IMPRISONMENT RATES(a), By sex

	NSW(b)	Vic.	Qld	SA	WA	Tas.	NT	ACT(c)	Aust.
MALES (RATE PER 100,000 ADULT POPULATION)									
2009	357.3	199.7	311.7	295.7	476.2	255.1	1 232.0	116.5	319.3
2010	347.2	201.3	302.5	292.6	494.2	236.4	1 239.4	144.3	316.4
2011	333.8	204.6	295.1	298.6	478.4	242.1	1 373.4	163.1	312.0
2011									
Jun Qtr	338.5	203.1	294.8	297.7	478.9	233.8	1 370.6	164.3	312.9
Sep Qtr	332.8	207.4	296.8	299.0	476.0	255.8	1 379.1	161.1	312.8
Dec Qtr	326.0	209.5	297.8	301.5	480.4	254.5	1 423.2	168.6	312.6
2012									
Mar Qtr	324.3	208.7	294.6	310.2	486.7	246.7	1 505.2	187.2	313.6
Jun Qtr	327.8	214.4	299.3	311.4	491.1	242.1	1 489.7	186.6	318.1
Apr	328.2	216.6	300.5	313.4	491.9	246.3	1 487.5	184.4	319.3
May	327.6	213.9	299.4	311.5	490.1	243.7	1 500.6	186.5	318.0
Jun	327.6	212.7	297.9	309.3	491.4	236.3	1 480.6	189.0	317.1
FEMALES (RATE PER 100,000 ADULT POPULATION)									
2009	27.9	13.4	24.9	19.8	41.4	19.4	61.7	10.6	24.2
2010	27.0	14.5	24.7	19.2	45.4	17.2	61.1	10.5	24.4
2011	23.9	14.5	24.0	19.2	40.8	18.7	71.8	8.8	23.0
2011									
Jun Qtr	24.3	14.5	23.7	18.0	40.7	21.1	73.4	10.7	23.0
Sep Qtr	24.1	14.6	24.6	19.9	38.7	19.6	73.4	9.1	23.1
Dec Qtr	22.5	14.7	24.6	19.6	41.3	19.2	71.4	5.3	22.7
2012									
Mar Qtr	22.7	14.3	24.8	19.7	43.8	17.6	86.8	8.0	23.1
Jun Qtr	22.9	15.0	26.2	20.3	46.4	18.6	106.9	7.7	24.2
Apr	22.8	14.7	26.2	20.5	46.0	16.3	115.2	8.0	24.1
May	22.8	14.9	26.2	20.3	46.3	18.4	103.4	7.3	24.1
Jun	23.1	15.3	26.4	20.2	46.9	21.2	102.3	7.9	24.5
PERSONS (RATE PER 100,000 ADULT POPULATION)									
2009	189.4	104.8	167.2	154.7	260.7	134.2	670.3	62.7	169.7
2010	184.2	106.3	162.4	153.0	271.8	123.9	673.2	76.5	168.5
2011	176.0	107.8	158.4	156.0	261.7	127.5	747.3	85.0	165.6
2011									
Jun Qtr	178.5	107.1	158.1	154.9	261.8	124.7	747.8	86.5	166.1
Sep Qtr	175.6	109.2	159.5	156.5	259.5	134.6	750.1	84.2	166.0
Dec Qtr	171.4	110.3	160.1	157.7	263.1	133.7	771.8	86.0	165.7
2012									
Mar Qtr	170.7	109.7	158.6	161.9	267.7	129.2	821.1	96.5	166.4
Jun Qtr	172.6	112.5	161.2	163.0	269.3	128.6	835.4	95.8	169.0
Apr	172.8	113.5	161.7	164.1	269.5	129.4	838.1	94.9	169.5
May	172.5	112.3	161.2	163.1	268.7	129.2	839.5	95.6	168.9
Jun	172.6	111.9	160.6	161.9	269.7	127.0	828.4	97.1	168.6

- (a) Imprisonment rates are based on Estimated Resident Population counts – see Explanatory Notes, paragraphs 17–21.
- (b) Excludes ACT prisoners that were held in NSW prisons prior to September quarter 2009 – see Explanatory Notes, paragraph 35.
- (c) Includes ACT prisoners held in ACT as well as ACT prisoners that were held in NSW prior to the September quarter 2009 – see Explanatory Notes, paragraph 35.

PERSONS IN FULL-TIME CUSTODY(a), By type of custody

	NSW(b)	Vic.	Qld	SA	WA(c)	Tas.	NT	ACT(d)	Aust.(e)(f)	
PERSONS IN SECURE CUSTODY (AVERAGE DAILY NUMBER)										
2009	6 734	3 911	4 977	1 736	3 344	460	750	157	22 064	
2010	6 596	4 063	5 039	1 761	3 427	432	771	136	22 224	
2011	6 328	4 155	5 090	1 809	3 668	450	830	238	22 568	
2011										
Jun Qtr	6 408	4 120	5 070	1 793	3 661	435	831	244	22 562	
Sep Qtr	6 332	4 207	5 145	1 820	3 635	477	826	239	22 680	
Dec Qtr	6 157	4 260	5 173	1 835	3 726	479	848	237	22 715	
2012										
Mar Qtr	6 121	4 259	5 163	1 890	3 849	469	898	266	22 915	
Jun Qtr	6 089	4 314	5 080	1 889	3 874	474	927	268	22 917	
Apr	6 102	4 347	5 113	1 902	3 922	474	939	266	23 065	
May	6 078	4 302	5 069	1 889	3 841	477	930	267	22 853	
Jun	6 089	4 293	5 059	1 877	3 861	471	912	272	22 834	
PERSONS IN OPEN CUSTODY (AVERAGE DAILY NUMBER)										
2009	3 576	456	645	214	1 061	54	323	13	6 329	
2010	3 658	490	585	200	1 307	49	342	77	6 708	
2011	3 598	543	494	212	994	48	420	2	6 312	
2011										
Jun Qtr	3 650	537	492	211	986	52	420	..	6 347	
Sep Qtr	3 589	561	489	212	1 002	50	425	..	6 329	
Dec Qtr	3 555	576	507	215	1 008	45	445	8	6 359	
2012										
Mar Qtr	3 571	566	486	219	1 014	38	485	10	6 389	
Jun Qtr	3 594	582	557	218	1 075	35	495	9	6 566	
Apr	3 589	589	545	219	1 031	38	488	9	6 508	
May	3 597	582	570	219	1 098	35	499	10	6 610	
Jun	3 595	573	557	216	1 096	32	499	10	6 577	
PERSONS IN CUSTODY (AVERAGE DAILY NUMBER)										
2009	10 310	4 367	5 622	1 951	4 402	513	1 073	170	28 390	
2010	10 255	4 553	5 624	1 961	4 734	480	1 113	212	28 932	
2011	9 926	4 698	5 584	2 021	4 663	498	1 250	240	28 881	
2011										
Jun Qtr	10 057	4 657	5 562	2 004	4 647	487	1 251	244	28 909	
Sep Qtr	9 921	4 768	5 634	2 032	4 638	527	1 251	239	29 008	
Dec Qtr	9 712	4 836	5 680	2 051	4 734	524	1 294	245	29 074	
2012										
Mar Qtr	9 693	4 824	5 649	2 109	4 862	507	1 382	276	29 303	
Jun Qtr	9 683	4 896	5 637	2 107	4 950	509	1 422	278	29 482	
Apr	9 691	4 936	5 657	2 121	4 953	512	1 427	275	29 573	
May	9 675	4 885	5 639	2 108	4 939	512	1 429	277	29 463	
Jun	9 683	4 867	5 616	2 093	4 957	503	1 410	282	29 411	
..	not applicable									
(a)	For the calculation of annual and quarterly figures – see Explanatory Notes, paragraph 5.				(d)	Data prior to the September quarter 2009 includes ACT prisoners held in ACT as well as ACT prisoners held in NSW – see Explanatory Notes, paragraph 35.				
(b)	Data prior to the September quarter 2009 includes ACT prisoners held in NSW prisons – see Explanatory Notes, paragraph 35.				(e)	See footnote c.				
(c)	Data for the period prior to September quarter 2009 are not comparable – see Explanatory Notes, paragraphs 30.				(f)	For the period prior to the September quarter 2009, ACT prisoners held in NSW prisons are included in both NSW and ACT figures. The sum of the state/territory columns will therefore be greater than the Australian total – see Explanatory Notes, paragraph 35.				

IMPRISONMENT RATES(a), By type of custody

	NSW(b)	Vic.	Qld	SA	WA(c)	Tas.	NT	ACT(d)	Aust. (e)
PERSONS IN SECURE CUSTODY (RATE PER 100,000 ADULT POPULATION)									
2009	123.8	93.8	148.0	137.7	198.2	120.1	468.3	57.9	131.9
2010	118.5	94.8	145.5	137.4	196.6	111.4	466.4	48.8	129.4
2011	112.2	95.3	144.4	139.6	205.9	115.1	496.0	84.3	129.4
2011									
Jun Qtr	113.7	94.7	144.1	138.6	206.2	111.4	496.7	86.5	129.6
Sep Qtr	112.1	96.3	145.7	140.2	203.4	121.8	495.2	84.2	129.8
Dec Qtr	108.7	97.2	145.8	141.1	207.1	122.3	506.1	83.2	129.5
2012									
Mar Qtr	107.8	96.8	144.9	145.1	211.9	119.6	533.3	93.1	130.2
Jun Qtr	108.5	99.2	145.2	146.2	210.8	119.7	544.4	92.6	131.4
Apr	108.8	99.9	146.2	147.1	213.4	119.7	551.5	91.8	132.2
May	108.3	98.9	144.9	146.1	209.0	120.4	546.2	92.2	131.0
Jun	108.5	98.7	144.6	145.2	210.1	119.0	535.6	93.8	130.9
PERSONS IN OPEN CUSTODY (RATE PER 100,000 ADULT POPULATION)									
2009	65.6	10.9	19.2	17.0	62.9	14.0	202.0	4.9	37.8
2010	65.7	11.4	16.9	15.6	75.2	12.5	206.9	27.8	39.1
2011	63.8	12.5	14.0	16.4	55.8	12.4	251.3	0.7	36.2
2011									
Jun Qtr	64.8	12.3	14.0	16.3	55.6	13.2	251.1	..	36.5
Sep Qtr	63.5	12.9	13.9	16.3	56.1	12.8	254.9	..	36.2
Dec Qtr	62.8	13.1	14.3	16.6	56.0	11.5	265.7	2.7	36.3
2012									
Mar Qtr	62.9	12.9	13.7	16.8	55.8	9.6	287.8	3.5	36.3
Jun Qtr	64.1	13.4	15.9	16.9	58.5	8.8	290.9	3.3	37.6
Apr	64.0	13.5	15.6	16.9	56.1	9.7	286.7	3.1	37.3
May	64.1	13.4	16.3	16.9	59.8	8.9	293.3	3.4	37.9
Jun	64.1	13.2	15.9	16.7	59.6	8.0	292.8	3.3	37.7
PERSONS IN CUSTODY (RATE PER 100,000 ADULT POPULATION)									
2009	189.4	104.8	167.2	154.7	260.7	134.2	670.3	62.7	169.7
2010	184.2	106.3	162.4	153.0	271.8	123.9	673.2	76.5	168.5
2011	176.0	107.8	158.4	156.0	261.7	127.5	747.3	85.0	165.6
2011									
Jun Qtr	178.5	107.1	158.1	154.9	261.8	124.7	747.8	86.5	166.1
Sep Qtr	175.6	109.2	159.5	156.5	259.5	134.6	750.1	84.2	166.0
Dec Qtr	171.4	110.3	160.1	157.7	263.1	133.7	771.8	86.0	165.7
2012									
Mar Qtr	170.7	109.7	158.6	161.9	267.7	129.2	821.1	96.5	166.4
Jun Qtr	172.6	112.5	161.2	163.0	269.3	128.6	835.4	95.8	169.0
Apr	172.8	113.5	161.7	164.1	269.5	129.4	838.1	94.9	169.5
May	172.5	112.3	161.2	163.1	268.7	129.2	839.5	95.6	168.9
Jun	172.6	111.9	160.6	161.9	269.7	127.0	828.4	97.1	168.6

.. not applicable

- (a) Imprisonment rates are based on Estimated Resident Population counts – see Explanatory Notes, paragraphs 17–21.
- (b) Excludes ACT prisoners that were held in NSW prisons prior to September quarter 2009 – see Explanatory Notes, paragraph 35.

- (c) Data prior to the September quarter 2009 are not comparable - see Explanatory Notes, paragraph 30.
- (d) Includes ACT prisoners held in ACT as well as ACT prisoners that were held in NSW prior to the September quarter 2009 – see Explanatory Notes, paragraph 35.
- (e) See footnote c.

PERSONS IN FULL-TIME CUSTODY(a), By legal status

	NSW(b)	Vic.	Qld	SA	WA	Tas.	NT	ACT(c)	Aust. (d)
UNSENTENCED (NUMBER ON FIRST DAY OF MONTH)									
2009	2 686	856	1 152	671	718	110	258	79	6 529
2010	2 657	834	1 186	678	770	98	249	85	6 557
2011	2 774	886	1 187	638	856	95	290	85	6 810
2011									
Jun Qtr	2 865	896	1 190	647	862	90	314	93	6 956
Sep Qtr	2 771	894	1 203	610	841	107	287	77	6 790
Dec Qtr	2 704	907	1 184	621	896	101	275	77	6 766
2012									
Mar Qtr	2 730	929	1 223	679	964	115	318	98	7 057
Jun Qtr	2 657	980	1 233	684	983	101	331	95	7 064
SENTENCED (NUMBER ON FIRST DAY OF MONTH)									
2009	7 620	3 499	4 452	1 294	3 647	404	814	88	21 800
2010	7 604	3 719	4 439	1 288	3 973	380	862	126	22 391
2011	7 200	3 805	4 394	1 387	3 798	401	952	151	22 089
2011									
Jun Qtr	7 253	3 746	4 380	1 359	3 802	387	935	146	22 008
Sep Qtr	7 195	3 870	4 407	1 433	3 790	418	975	163	22 251
Dec Qtr	7 103	3 939	4 531	1 428	3 829	428	1 006	158	22 422
2012									
Mar Qtr	6 987	3 863	4 401	1 429	3 872	391	1 058	168	22 169
Jun Qtr	7 064	3 914	4 413	1 447	3 972	411	1 092	180	22 493
TOTAL (NUMBER ON FIRST DAY OF MONTH)									
2009	10 306	4 355	5 604	1 964	4 365	514	1 072	167	28 329
2010	10 261	4 553	5 625	1 966	4 743	478	1 112	211	28 948
2011	9 974	4 692	5 581	2 024	4 654	496	1 242	236	28 899
2011									
Jun Qtr	10 118	4 641	5 570	2 005	4 664	477	1 250	238	28 964
Sep Qtr	9 965	4 764	5 610	2 042	4 631	526	1 263	240	29 041
Dec Qtr	9 807	4 846	5 715	2 050	4 725	529	1 281	235	29 188
2012									
Mar Qtr	9 717	4 793	5 625	2 108	4 836	506	1 375	266	29 226
Jun Qtr	9 721	4 894	5 646	2 131	4 955	512	1 423	276	29 557
Apr	9 743	4 919	5 678	2 119	4 964	518	1 427	276	29 644
May	9 699	4 914	5 595	2 133	4 937	512	1 424	269	29 483
Jun	9 720	4 849	5 664	2 140	4 964	507	1 418	282	29 544

- (a) Figures for the quarter and year for first day of month counts are calculated as a simple average – see Explanatory Notes, paragraph 5.
- (b) Data prior to the September quarter 2009 includes ACT prisoners held in NSW prisons – see Explanatory Notes, paragraph 35.
- (c) Data prior to the September quarter 2009 includes ACT prisoners held in ACT as well as ACT prisoners held in NSW – see Explanatory Notes, paragraph 35.
- (d) For the period prior to the September quarter 2009, ACT Prisoners held in NSW prisons are included in both NSW and ACT figures. The sum of the state/territory columns will therefore be greater than the Australian total – see Explanatory Notes, paragraph 35.

IMPRISONMENT RATES(a), By legal status

	NSW(b)	Vic.	Qld	SA	WA	Tas.	NT	ACT(c)(d)	Aust.
UNSENTENCED (RATE PER 100,000 ADULT POPULATION)									
2009	49.4	20.5	34.3	53.2	42.5	28.8	160.9	29.1	39.0
2010	47.7	19.5	34.2	52.9	44.2	25.3	150.9	30.6	38.2
2011	49.2	20.3	33.7	49.2	48.0	24.4	173.3	30.1	39.0
2011									
Jun Qtr	50.9	20.6	33.8	50.0	48.5	23.0	187.9	32.9	40.0
Sep Qtr	49.0	20.5	34.1	47.0	47.1	27.4	172.3	27.1	38.9
Dec Qtr	47.7	20.7	33.4	47.8	49.8	25.8	163.9	27.2	38.6
2012									
Mar Qtr	48.1	21.1	34.3	52.1	53.1	29.4	188.7	34.4	40.1
Jun Qtr	47.4	22.5	35.2	52.9	53.5	25.6	194.6	32.9	40.5
SENTENCED (RATE PER 100,000 ADULT POPULATION)									
2009	139.9	84.0	132.4	102.6	216.0	105.5	508.6	32.4	130.3
2010	136.6	86.8	128.2	100.5	228.1	98.0	521.8	45.4	130.4
2011	127.7	87.3	124.6	107.0	213.2	102.4	569.5	53.6	126.6
2011									
Jun Qtr	128.8	86.1	124.5	105.0	214.2	99.1	559.1	51.7	126.4
Sep Qtr	127.4	88.6	124.8	110.4	212.1	106.8	584.8	57.5	127.3
Dec Qtr	125.4	89.8	127.7	109.8	212.8	109.1	600.4	55.4	127.8
2012									
Mar Qtr	123.0	87.8	123.5	109.7	213.2	99.5	628.3	58.8	125.9
Jun Qtr	125.9	90.0	126.2	111.9	216.1	103.8	641.3	62.2	128.9
TOTAL (RATE PER 100,000 ADULT POPULATION)									
2009	189.3	104.5	166.6	155.8	258.5	134.3	669.5	61.6	169.4
2010	184.3	106.3	162.4	153.4	272.3	123.3	672.7	76.0	168.6
2011	176.8	107.6	158.3	156.2	261.2	126.8	742.7	83.7	165.7
2011									
Jun Qtr	179.6	106.7	158.3	155.0	262.8	122.0	747.0	84.6	166.4
Sep Qtr	176.4	109.1	158.8	157.4	259.2	134.3	757.1	84.6	166.2
Dec Qtr	173.1	110.5	161.1	157.6	262.6	134.9	764.3	82.6	166.4
2012									
Mar Qtr	171.1	109.0	157.9	161.8	266.3	128.9	817.0	93.2	166.0
Jun Qtr	173.3	112.5	161.4	164.8	269.6	129.4	835.9	95.1	169.4
Apr	173.7	113.1	162.3	163.9	270.1	130.8	838.3	95.2	169.9
May	172.9	113.0	160.0	165.0	268.6	129.3	836.5	92.8	169.0
Jun	173.3	111.5	161.9	165.6	270.1	128.0	833.0	97.2	169.4

(a) Imprisonment rates are based on Estimated Resident Population counts – see Explanatory Notes, paragraphs 17–21.

(b) Excludes ACT prisoners that were held in NSW prisons prior to September quarter 2009 – see Explanatory Notes, paragraph 35.

(c) Includes ACT prisoners held in ACT as well as ACT prisoners that were held in NSW prior to the September quarter 2009 – see Explanatory Notes, paragraph 35.

(d) Data prior to the June quarter 2009 mainly included unsentenced persons in ACT prison custody – see Explanatory Notes, paragraph 35.

SENTENCED PRISONER RECEPTIONS INTO FULL-TIME CUSTODY(a)

	NSW(b)	Vic.	Qld	SA	WA	Tas.	NT(c)	ACT(d)	Aust.(e)
NUMBER									
2009	8 848	4 190	7 728	1 583	5 372	635	1 674	123	30 153
2010	8 175	4 230	7 711	1 613	5 551	546	2 055	182	30 063
2011	7 627	4 295	8 733	1 685	5 208	610	2 483	219	30 860
2011									
Jun Qtr	1 715	1 110	2 134	406	1 151	171	594	60	7 341
Sep Qtr	2 104	1 171	2 253	451	1 239	160	627	62	8 067
Dec Qtr	1 960	1 082	2 394	421	1 455	131	651	60	8 154
2012									
Mar Qtr	2 074	982	2 325	386	1 494	148	685	55	8 149
Jun Qtr	2 248	1 090	2 300	413	1 358	132	600	55	8 196

- (a) The count of sentenced prisoner receptions is an addition of the total number for each month within the reference period – see Explanatory Notes, paragraphs 2–5.
- (b) Data prior to the September quarter 2009 includes ACT prisoners held in NSW prisons – see Explanatory Notes, paragraph 35.
- (c) A new processing system was introduced in September 2009 resulting in increased counts from the December Quarter 2009 – see Explanatory Notes, paragraph 33.

- (d) Data prior to the September quarter 2009 includes ACT prisoners held in ACT as well as ACT prisoners held in NSW – see Explanatory Notes, paragraph 35.
- (e) For the period prior to the September quarter 2009, ACT Prisoners held in NSW prisons are included in both NSW and ACT figures. The sum of the state/territory columns will therefore be greater than the Australian total – see Explanatory Notes, paragraph 35.

	NSW		ACT	
	no.(c)	rate(d)	no.(c)	rate(d)
MALES				
2009	740	27.8	44	33.0
2010	636	23.3	47	34.6
2011	136	4.9	57	40.9
2011				
Jun Qtr	144	5.2	50	36.2
Sep Qtr	83	3.0	61	43.6
Dec Qtr	56	2.0	62	43.7
2012				
Mar Qtr	45	1.6	58	40.8
Jun Qtr	20	0.7	51	35.4
Apr	23	0.8	55	38.2
May	20	0.7	50	34.7
Jun	18	0.7	48	33.4
FEMALES				
2009	67	2.4	7	4.9
2010	53	1.9	7	4.7
2011	15	0.5	6	4.1
2011				
Jun Qtr	17	0.6	5	3.8
Sep Qtr	9	0.3	7	4.8
Dec Qtr	7	0.2	6	3.8
2012				
Mar Qtr	6	0.2	4	2.5
Jun Qtr	2	0.1	1	0.9
Apr	3	0.1	2	1.4
May	2	0.1	1	0.7
Jun	2	0.1	1	0.7
PERSONS				
2009	806	14.8	51	18.7
2010	689	12.4	54	19.4
2011	151	2.7	63	22.3
2011				
Jun Qtr	161	2.9	56	19.8
Sep Qtr	93	1.6	68	23.9
Dec Qtr	64	1.1	67	23.6
2012				
Mar Qtr	51	0.9	61	21.4
Jun Qtr	22	0.4	52	17.9
Apr	25	0.5	57	19.5
May	22	0.4	51	17.4
Jun	20	0.4	49	16.8

- (a) Periodic detention is a form of custody only used in NSW and the ACT. This order type has ceased from October 2010 in New South Wales.
- (b) Imprisonment rates are based on Estimated Resident Population counts – see Explanatory Notes, paragraphs 17–21.
- (c) Average daily number.
- (d) Rate per 100,000 adult population.

	NSW	Vic.	Qld	SA	WA	Tas.	NT	ACT	Aust.
MALES (NUMBER ON FIRST DAY OF MONTH)									
2009	351	89	80	16	51	9	12	—	608
2010	343	102	91	18	80	4	15	1	653
2011	355	100	92	14	155	4	35	1	756
2011									
Jun Qtr	352	93	85	14	155	2	39	1	741
Sep Qtr	353	104	94	13	160	3	38	1	766
Dec Qtr	365	105	111	14	169	6	40	2	812
2012									
Mar Qtr	369	98	121	13	164	6	41	1	814
Jun Qtr	390	101	123	14	164	5	41	1	838
FEMALES (NUMBER ON FIRST DAY OF MONTH)									
2009	68	7	20	4	12	4	2	—	117
2010	68	27	26	3	15	2	2	—	142
2011	65	27	22	2	17	1	1	—	135
2011									
Jun Qtr	63	27	23	3	15	—	1	—	133
Sep Qtr	66	26	21	1	16	—	3	—	133
Dec Qtr	68	25	19	1	20	3	2	—	138
2012									
Mar Qtr	66	22	18	2	21	2	2	—	134
Jun Qtr	59	22	18	5	20	1	3	—	129
PERSONS (NUMBER ON FIRST DAY OF MONTH)									
2009	420	97	100	20	62	12	14	—	726
2010	411	128	117	20	94	7	17	1	795
2011	419	127	113	16	173	5	37	1	891
2011									
Jun Qtr	415	121	108	18	171	2	39	1	874
Sep Qtr	419	130	115	14	176	3	41	1	900
Dec Qtr	433	129	130	15	189	9	42	2	950
2012									
Mar Qtr	435	120	139	15	185	8	43	1	948
Jun Qtr	449	124	141	19	183	6	44	1	967
Apr	445	121	137	19	189	np	45	np	963
May	452	120	142	18	185	np	43	np	966
Jun	450	130	144	20	176	np	44	np	971

— nil or rounded to zero (including null cells)

np not available for publication but included in totals where applicable, unless otherwise indicated

- (a) Counts reflect the state or territory in which a prisoner was sentenced, not where they were held in custody.
- (b) Figures for the quarter and year for the first day of the month counts are calculated as a simple average – see Explanatory Notes, paragraph 5.

	NSW(c)	Vic.	Qld	SA	WA	Tas.	NT	ACT(d)	Aust.(e)
MALES (AVERAGE DAILY NUMBER)									
2009	2 033	233	1 435	416	1 635	60	842	23	6 673
2010	2 049	257	1 527	426	1 668	62	871	33	6 892
2011	2 027	270	1 511	441	1 627	63	978	33	6 949
2011									
Jun Qtr	2 077	264	1 517	447	1 618	64	978	32	6 997
Sep Qtr	2 041	276	1 512	433	1 607	61	971	29	6 929
Dec Qtr	1 980	276	1 520	438	1 664	69	1 018	34	6 998
2012									
Mar Qtr	2 005	298	1 519	441	1 724	74	1 087	45	7 194
Jun Qtr	1 985	320	1 504	434	1 758	60	1 115	46	7 223
Apr	1 989	321	1 500	439	1 766	67	1 114	46	7 241
May	1 982	319	1 511	430	1 748	57	1 125	45	7 218
Jun	1 985	321	1 501	432	1 761	57	1 107	46	7 209
FEMALES (AVERAGE DAILY NUMBER)									
2009	226	19	123	31	165	7	38	3	612
2010	210	26	136	34	187	7	41	2	643
2011	192	24	152	39	158	8	49	3	625
2011									
Jun Qtr	193	24	153	34	157	9	50	3	624
Sep Qtr	197	22	152	38	147	9	50	4	620
Dec Qtr	184	23	147	49	161	8	47	1	621
2012									
Mar Qtr	189	27	158	49	186	8	61	2	679
Jun Qtr	187	31	163	50	207	8	75	2	723
Apr	190	32	169	51	201	7	82	3	735
May	188	28	160	51	209	7	71	2	716
Jun	184	34	162	48	209	10	71	2	719
PERSONS (AVERAGE DAILY NUMBER)									
2009	2 259	252	1 557	447	1 800	66	880	25	7 285
2010	2 258	284	1 663	460	1 855	68	912	35	7 534
2011	2 219	294	1 663	479	1 784	72	1 027	36	7 574
2011									
Jun Qtr	2 270	288	1 671	481	1 775	73	1 029	36	7 621
Sep Qtr	2 238	298	1 663	472	1 754	70	1 021	33	7 549
Dec Qtr	2 164	299	1 667	487	1 825	77	1 065	35	7 619
2012									
Mar Qtr	2 194	325	1 676	489	1 910	82	1 148	47	7 873
Jun Qtr	2 172	351	1 668	484	1 965	68	1 190	48	7 946
Apr	2 179	352	1 669	490	1 968	74	1 196	49	7 977
May	2 170	347	1 671	481	1 957	64	1 196	47	7 933
Jun	2 169	355	1 663	480	1 970	67	1 178	48	7 929

(a) Excludes persons whose Aboriginal and Torres Strait Islander status is unknown – see Explanatory Notes, paragraph 28.

(b) For the calculation of quarterly figures – see Explanatory Notes, paragraph 5.

(c) Data prior to the September quarter 2009 includes ACT prisoners held in NSW prisons – see Explanatory Notes, paragraph 35.

(d) Data prior to the September quarter 2009 includes ACT prisoners held in ACT as well as ACT prisoners held in NSW – see Explanatory Notes, paragraph 35.

(e) For the period prior to the September quarter 2009, ACT Prisoners held in NSW prisons are included in both NSW and ACT figures. The sum of the state/territory columns will therefore be greater than the Australian total – see Explanatory Notes, paragraph 35.

	NSW(c)	Vic.	Qld	SA	WA	Tas.	NT	ACT(d)	Aust.
MALES (RATE PER 100,000 ADULT ABORIGINAL AND TORRES STRAIT ISLANDER POPULATION)									
2009	4 648.1	2 337.5	3 324.5	4 954.0	7 519.9	1 072.0	4 393.7	1 676.9	4 360.2
2010	4 430.0	2 428.0	3 311.4	4 958.7	7 428.0	1 056.3	4 383.3	2 393.7	4 279.2
2011	4 249.3	2 455.4	3 160.3	4 980.5	7 032.8	1 050.5	4 793.5	2 287.5	4 177.3
2011									
Jun Qtr	4 353.9	2 397.9	3 174.1	5 049.9	6 996.8	1 054.7	4 795.9	2 241.8	4 206.2
Sep Qtr	4 277.4	2 511.4	3 162.3	4 896.9	6 948.3	1 007.2	4 758.6	1 984.5	4 165.0
Dec Qtr	4 149.5	2 509.3	3 180.3	4 944.3	7 193.0	1 147.8	4 990.3	2 367.5	4 206.7
2012									
Mar Qtr	4 082.3	2 620.7	3 069.4	4 839.5	7 234.6	1 187.0	5 204.7	3 041.0	4 193.8
Jun Qtr	4 041.1	2 813.5	3 040.4	4 762.5	7 377.7	965.2	5 338.6	3 060.5	4 210.7
Apr	4 047.9	2 818.9	3 032.2	4 821.5	7 411.2	1 068.1	5 332.3	3 079.0	4 221.5
May	4 035.0	2 804.0	3 055.2	4 722.7	7 335.0	913.1	5 385.1	2 996.7	4 207.7
Jun	4 040.5	2 818.1	3 033.5	4 744.6	7 388.3	916.2	5 296.9	3 107.8	4 202.9
FEMALES (RATE PER 100,000 ADULT ABORIGINAL AND TORRES STRAIT ISLANDER POPULATION)									
2009	492.1	186.9	266.2	343.5	731.4	121.2	188.3	198.2	379.1
2010	434.1	239.4	281.9	366.0	821.7	112.8	191.1	148.8	381.6
2011	385.1	212.6	305.2	406.2	674.7	130.5	222.5	202.9	359.8
2011									
Jun Qtr	387.1	210.3	307.6	355.0	672.5	144.4	228.5	226.1	359.3
Sep Qtr	395.8	191.1	303.8	403.5	629.5	152.3	229.5	291.5	357.3
Dec Qtr	369.5	200.0	295.1	516.4	690.3	121.9	215.9	69.3	357.5
2012									
Mar Qtr	367.5	228.6	306.2	499.5	775.2	124.9	270.3	123.4	379.8
Jun Qtr	364.5	266.5	317.1	513.1	859.3	123.7	331.3	162.6	404.5
Apr	370.4	269.6	327.8	523.3	838.0	109.6	364.1	208.5	411.2
May	364.9	241.3	309.8	523.3	870.6	109.6	314.9	145.3	400.3
Jun	358.2	289.5	313.8	492.5	868.9	152.3	315.4	134.5	402.2
PERSONS (RATE PER 100,000 ADULT ABORIGINAL AND TORRES STRAIT ISLANDER POPULATION)									
2009	2 517.7	1 244.6	1 746.1	2 561.0	4 058.0	590.2	2 227.9	933.0	2 316.4
2010	2 387.8	1 314.2	1 762.3	2 581.0	4 104.6	578.0	2 204.0	1 265.6	2 286.9
2011	2 274.3	1 316.8	1 702.4	2 614.0	3 836.3	584.9	2 421.7	1 244.1	2 227.9
2011									
Jun Qtr	2 326.5	1 287.3	1 710.3	2 621.1	3 817.3	594.0	2 425.9	1 232.9	2 241.8
Sep Qtr	2 293.5	1 333.5	1 702.6	2 572.3	3 771.6	574.6	2 408.6	1 137.1	2 220.6
Dec Qtr	2 217.5	1 336.9	1 706.9	2 653.6	3 923.8	628.6	2 512.9	1 217.2	2 241.1
2012									
Mar Qtr	2 182.8	1 408.5	1 659.5	2 595.7	3 991.2	648.1	2 645.0	1 585.2	2 247.0
Jun Qtr	2 161.1	1 522.8	1 650.9	2 565.6	4 104.7	538.3	2 741.1	1 614.4	2 267.9
Apr	2 167.5	1 527.0	1 652.3	2 599.3	4 110.7	581.8	2 755.1	1 646.6	2 276.6
May	2 158.4	1 505.3	1 654.4	2 551.6	4 089.1	505.5	2 755.0	1 573.8	2 264.3
Jun	2 157.7	1 536.7	1 645.8	2 546.3	4 114.8	528.6	2 712.8	1 624.2	2 262.9

(a) Rates are based on Aboriginal and Torres Strait Islander adult population estimates and projections for 30 June of the relevant calendar year – see Explanatory Notes, paragraphs 22–25.

(b) Excludes persons whose Aboriginal and Torres Strait Islander status is unknown – see Explanatory Notes, paragraph 28.

(c) Excludes ACT prisoners that were held in NSW prisons prior to September quarter 2009 – see Explanatory Notes, paragraph 35.

(d) Includes ACT prisoners held in ACT as well as ACT prisoners held in NSW – see Explanatory Notes, paragraph 35.

ABORIGINAL AND TORRES STRAIT ISLANDER PERSONS IN FULL-TIME CUSTODY(a)(b), By legal status

	NSW(c)	Vic.	Qld	SA	WA	Tas.	NT	ACT(d)	Aust.(e)
UNSENTENCED (NUMBER ON FIRST DAY OF MONTH)									
2009	537	52	299	189	297	18	210	15	1 615
2010	529	55	339	197	313	18	209	19	1 678
2011	569	61	335	191	374	14	241	17	1 803
2011									
Jun Qtr	583	60	343	202	382	11	268	19	1 869
Sep Qtr	585	57	343	179	359	13	234	15	1 787
Dec Qtr	567	66	319	190	405	15	226	15	1 802
2012									
Mar Qtr	586	73	331	189	438	20	276	20	1 932
Jun Qtr	561	80	341	204	454	10	291	17	1 958
SENTENCED (NUMBER ON FIRST DAY OF MONTH)									
2009	1 718	198	1 248	262	1 493	49	671	10	5 647
2010	1 744	228	1 322	265	1 549	50	701	16	5 874
2011	1 653	233	1 324	292	1 406	57	780	18	5 763
2011									
Jun Qtr	1 691	229	1 333	284	1 404	61	756	16	5 773
Sep Qtr	1 668	243	1 316	298	1 395	58	804	18	5 801
Dec Qtr	1 615	231	1 349	297	1 413	59	822	17	5 803
2012									
Mar Qtr	1 599	244	1 336	297	1 455	64	870	25	5 890
Jun Qtr	1 608	268	1 330	293	1 516	60	906	30	6 012
TOTAL (NUMBER ON FIRST DAY OF MONTH)									
2009	2 255	250	1 547	450	1 789	66	881	25	7 262
2010	2 273	283	1 661	462	1 862	67	910	35	7 552
2011	2 223	294	1 659	482	1 781	70	1 022	35	7 566
2011									
Jun Qtr	2 274	289	1 676	485	1 786	72	1 024	35	7 642
Sep Qtr	2 254	300	1 659	478	1 754	71	1 038	34	7 588
Dec Qtr	2 181	297	1 667	487	1 818	74	1 048	32	7 605
2012									
Mar Qtr	2 185	317	1 667	485	1 893	83	1 146	45	7 822
Jun Qtr	2 169	348	1 671	497	1 970	70	1 198	47	7 970

(a) Figures for the quarter and year for first day of the month counts are calculated as a simple average – see Explanatory Notes, paragraph 5.

(b) Excludes persons whose Aboriginal and Torres Strait Islander status is unknown – see Explanatory Notes, paragraph 28.

(c) Data prior to the September quarter 2009 includes ACT prisoners held in NSW prisons – see Explanatory Notes, paragraph 35.

(d) Data prior to the September quarter 2009 includes ACT prisoners held in ACT as well as ACT prisoners held in NSW – see Explanatory Notes, paragraph 35.

(e) For the period prior to the September quarter 2009, ACT prisoners held in NSW prisons are included in both NSW and ACT figures. The sum of the state/territory columns will therefore be greater than the Australian total – see Explanatory Notes, paragraph 35.

	NSW(d)	Vic.	Qld	SA	WA	Tas.	NT	ACT(e)	Aust.
UNSENTENCED (RATE PER 100,000 ADULT ABORIGINAL AND TORRES STRAIT ISLANDER POPULATION)									
2009	599.6	254.9	335.9	1 080.7	667.8	156.4	532.5	548.1	514.1
2010	558.8	254.2	359.8	1 103.8	692.5	148.8	505.7	666.4	509.2
2011	583.5	273.1	343.2	1 038.8	804.3	111.1	569.4	597.9	530.2
2011									
Jun Qtr	597.5	270.1	351.1	1 099.7	822.0	90.0	632.9	658.6	549.7
Sep Qtr	599.9	255.2	351.5	977.9	772.6	106.3	552.7	531.5	525.7
Dec Qtr	580.7	297.0	326.2	1 037.9	870.8	122.7	532.3	508.4	530.2
2012									
Mar Qtr	582.9	314.8	327.7	1 000.8	915.1	155.5	635.7	682.3	551.5
Jun Qtr	558.4	345.1	337.2	1 080.4	948.5	79.1	671.0	570.5	558.7
SENTENCED (RATE PER 100,000 ADULT ABORIGINAL AND TORRES STRAIT ISLANDER POPULATION)									
2009	1 913.8	979.2	1 398.8	1 499.6	3 365.7	432.1	1 697.5	382.4	1 795.1
2010	1 843.9	1 057.3	1 400.9	1 488.9	3 426.2	421.8	1 694.5	582.4	1 783.1
2011	1 694.2	1 044.3	1 355.0	1 589.6	3 023.8	463.4	1 840.5	629.7	1 695.2
2011									
Jun Qtr	1 732.6	1 025.3	1 364.9	1 546.9	3 018.6	496.1	1 782.4	554.6	1 698.2
Sep Qtr	1 709.7	1 089.4	1 347.2	1 626.9	2 998.6	477.0	1 896.4	635.5	1 706.5
Dec Qtr	1 654.7	1 034.2	1 380.6	1 617.8	3 038.7	485.2	1 938.8	600.8	1 707.0
2012									
Mar Qtr	1 591.0	1 058.5	1 322.6	1 573.7	3 040.5	503.5	2 003.1	838.9	1 681.0
Jun Qtr	1 599.6	1 161.1	1 316.6	1 556.1	3 167.9	474.5	2 087.6	1 017.9	1 716.0
TOTAL (RATE PER 100,000 ADULT ABORIGINAL AND TORRES STRAIT ISLANDER POPULATION)									
2009	2 513.4	1 234.1	1 734.7	2 580.3	4 033.5	588.4	2 230.0	930.5	2 309.1
2010	2 402.8	1 311.4	1 760.7	2 592.8	4 118.7	570.6	2 200.2	1 248.8	2 292.3
2011	2 277.7	1 317.4	1 698.2	2 628.4	3 828.1	574.5	2 410.0	1 227.6	2 225.4
2011									
Jun Qtr	2 330.1	1 295.4	1 716.1	2 646.6	3 840.7	586.1	2 415.3	1 213.2	2 247.8
Sep Qtr	2 309.6	1 344.6	1 698.7	2 604.8	3 771.2	583.4	2 449.1	1 167.0	2 232.1
Dec Qtr	2 235.5	1 331.2	1 706.9	2 655.7	3 909.5	607.9	2 471.1	1 109.2	2 237.1
2012									
Mar Qtr	2 173.9	1 373.4	1 650.2	2 574.6	3 955.6	659.1	2 638.8	1 521.3	2 232.5
Jun Qtr	2 158.0	1 506.2	1 653.9	2 636.5	4 116.4	553.6	2 758.6	1 588.4	2 274.7

(a) Rates are based on the Aboriginal and Torres Strait Islander adult population estimates and projections for 30 June of the relevant calendar year – see Explanatory Notes, paragraphs 22–25.

(b) Figures for the quarter and year for first day of the month counts are calculated as a simple average – see Explanatory Notes, paragraph 5.

(c) Excludes persons whose Aboriginal and Torres Strait Islander status is unknown – see Explanatory Notes, paragraph 28.

(d) Excludes ACT prisoners that were in NSW prisons – see Explanatory Notes, paragraph 35.

(e) Includes ACT prisoners held in ACT as well as ACT prisoners that were held in NSW – see Explanatory Notes, paragraph 35.

PERSONS IN COMMUNITY-BASED CORRECTIONS(a)(b), By sex

	NSW	Vic.	Qld	SA	WA(c)	Tas.	NT(d)	ACT	Aust.(e)
MALES (NUMBER ON FIRST DAY OF MONTH)									
2009	15 254	6 943	11 629	4 902	4 377	1 015	971	1 167	46 258
2010	14 175	7 573	12 338	4 627	3 882	1 208	983	1 213	46 000
2011	13 689	7 333	12 205	4 551	3 437	1 369	900	1 200	44 682
2011									
Jun Qtr	13 697	7 322	12 136	4 585	3 474	1 357	864	1 191	44 625
Sep Qtr	13 733	7 270	12 224	4 530	3 424	1 364	897	1 203	44 645
Dec Qtr	13 835	7 310	12 204	4 490	3 361	1 423	918	1 195	44 736
2012									
Mar Qtr	13 813	6 985	12 061	4 406	3 184	1 447	911	1 153	43 960
Jun Qtr	14 070	7 154	12 123	4 347	3 164	1 502	939	1 096	44 396
Apr	14 090	7 031	12 096	4 332	3 155	1 478	904	1 108	44 194
May	14 058	7 172	12 158	4 339	3 158	1 508	928	1 087	44 408
Jun	14 063	7 260	12 116	4 370	3 178	1 519	986	1 093	44 585
FEMALES (NUMBER ON FIRST DAY OF MONTH)									
2009	2 806	1 533	2 979	1 118	1 215	257	148	227	10 283
2010	2 617	1 671	3 113	1 097	1 180	301	154	229	10 363
2011	2 454	1 671	3 035	1 039	977	357	159	213	9 906
2011									
Jun Qtr	2 469	1 666	3 039	1 050	1 002	344	152	214	9 936
Sep Qtr	2 448	1 667	3 024	1 025	955	366	162	214	9 862
Dec Qtr	2 449	1 668	3 001	1 023	939	373	170	214	9 837
2012									
Mar Qtr	2 484	1 594	3 003	1 017	911	386	166	200	9 761
Jun Qtr	2 506	1 584	3 023	988	937	405	164	195	9 802
Apr	2 476	1 570	3 002	1 000	932	401	163	197	9 741
May	2 523	1 598	3 020	987	943	410	161	196	9 838
Jun	2 519	1 585	3 046	978	935	405	167	191	9 826
PERSONS (NUMBER ON FIRST DAY OF MONTH) (f)									
2009	18 137	8 479	14 608	6 021	5 595	1 272	1 119	1 394	56 625
2010	16 851	9 248	15 451	5 725	5 063	1 510	1 138	1 442	56 426
2011	16 182	9 005	15 240	5 592	4 414	1 726	1 059	1 413	54 630
2011									
Jun Qtr	16 210	8 989	15 175	5 637	4 476	1 700	1 016	1 405	54 609
Sep Qtr	16 215	8 937	15 248	5 558	4 380	1 730	1 059	1 417	54 545
Dec Qtr	16 320	8 978	15 205	5 514	4 300	1 796	1 089	1 409	54 611
2012									
Mar Qtr	16 335	8 581	15 064	5 424	4 096	1 833	1 077	1 353	53 763
Jun Qtr	16 621	8 739	15 146	5 336	4 100	1 907	1 103	1 291	54 244
Apr	16 605	8 602	15 098	5 333	4 087	1 879	1 067	1 305	53 976
May	16 628	8 771	15 178	5 327	4 101	1 918	1 089	1 283	54 295
Jun	16 631	8 845	15 162	5 349	4 113	1 924	1 153	1 284	54 461

(a) Figures include persons with breached or suspended orders, with the exception of Vic. and Tas.

(b) Figures for the quarter and year for first day of the month counts are calculated as a simple average – see Explanatory Notes, paragraph 5.

(c) Data are subject to processing delays of 4 to 6 weeks – see Explanatory Notes, paragraph 31.

(d) Excludes bail data for the December quarter 2009 – see Explanatory Notes, paragraph 33.

(e) See footnotes c–d.

(f) Includes persons whose sex is unknown.

COMMUNITY-BASED CORRECTIONS RATES, By sex(a)

	NSW	Vic.	Qld	SA	WA	Tas.	NT	ACT	Aust.
MALES (RATE PER 100,000 ADULT POPULATION)									
2009	572.5	339.7	697.2	795.2	514.4	545.0	1 166.4	875.1	560.9
2010	518.7	359.8	718.5	737.6	441.9	640.3	1 145.6	887.0	543.0
2011	494.5	342.8	698.3	717.3	382.2	718.9	1 036.4	860.5	519.2
2011									
Jun Qtr	495.4	342.9	695.9	724.0	387.9	713.1	993.5	856.1	519.5
Sep Qtr	495.4	339.2	698.1	713.0	379.5	715.8	1 038.2	859.5	517.9
Dec Qtr	497.6	339.8	693.8	705.1	369.8	745.7	1 057.5	849.8	516.9
2012									
Mar Qtr	495.7	323.7	682.8	690.6	346.7	757.0	1 045.6	816.6	506.1
Jun Qtr	510.9	336.2	701.4	686.1	343.4	771.0	1 047.4	767.2	516.7
Apr	511.6	330.4	699.8	683.7	342.5	758.8	1 008.0	775.6	514.3
May	510.4	337.0	703.4	684.8	342.8	774.2	1 034.8	760.9	516.8
Jun	510.6	341.1	701.0	689.7	345.0	779.9	1 099.5	765.1	518.9
FEMALES (RATE PER 100,000 ADULT POPULATION)									
2009	101.3	72.1	175.6	173.5	145.3	130.7	192.6	165.4	121.2
2010	92.3	76.6	178.2	167.6	136.7	151.5	194.3	163.4	119.2
2011	85.4	75.3	170.8	157.2	110.7	177.9	198.1	148.8	112.1
2011									
Jun Qtr	86.1	75.3	171.3	158.9	114.0	171.5	189.3	150.1	112.7
Sep Qtr	85.1	74.9	169.8	154.8	108.0	182.2	201.2	149.2	111.4
Dec Qtr	84.9	74.7	167.8	154.2	105.4	185.5	210.9	148.7	110.7
2012									
Mar Qtr	85.9	71.1	167.2	153.0	101.5	191.7	204.5	138.1	109.4
Jun Qtr	87.8	71.3	170.8	150.0	102.2	201.5	203.2	132.3	110.7
Apr	86.7	70.6	169.7	151.8	101.7	199.3	202.3	133.9	110.0
May	88.4	71.9	170.7	149.8	102.9	203.8	199.9	133.2	111.1
Jun	88.2	71.3	172.2	148.4	102.0	201.3	207.3	129.8	111.0
PERSONS (RATE PER 100,000 ADULT POPULATION) (b)									
2009	333.8	203.4	434.3	477.6	331.6	332.4	699.0	515.0	338.5
2010	302.7	215.8	446.1	446.7	290.7	389.5	688.5	520.4	328.7
2011	286.9	206.6	432.3	431.6	247.8	441.3	633.2	500.4	313.2
2011									
Jun Qtr	287.8	206.7	431.3	435.7	252.2	435.2	607.4	498.8	313.7
Sep Qtr	287.0	204.6	431.7	428.3	245.1	442.0	635.0	500.1	312.1
Dec Qtr	288.1	204.8	428.6	424.1	238.9	458.3	649.6	495.1	311.3
2012									
Mar Qtr	287.7	195.1	422.8	416.3	225.5	467.0	640.0	473.4	305.4
Jun Qtr	296.3	200.9	433.0	412.8	223.1	481.6	647.9	445.1	311.0
Apr	296.0	197.7	431.7	412.6	222.4	474.5	626.8	450.0	309.4
May	296.4	201.6	434.0	412.1	223.1	484.4	639.7	442.5	311.2
Jun	296.5	203.3	433.5	413.8	223.8	485.9	677.3	442.8	312.2

(a) With the exception of Vic. and Tas., the number of persons in community-based corrections includes those persons with breached or suspended orders.

(b) Includes persons whose sex is unknown.

	NSW	Vic.	Qld	SA	WA(d)	Tas.	NT(e)	ACT	Aust.(f)
RESTRICTED MOVEMENT (NUMBER ON FIRST DAY OF MONTH)									
2009	164	34	..	445	4	..	34	..	681
2010	136	38	..	415	1	..	28	..	618
2011	110	37	..	398	—	..	32	..	576
2011									
Jun Qtr	121	33	..	395	—	..	29	..	579
Sep Qtr	100	31	..	389	—	..	33	..	553
Dec Qtr	92	44	..	414	—	..	40	..	589
2012									
Mar Qtr	92	34	..	435	—	..	34	..	595
Jun Qtr	86	10	..	446	—	..	35	..	577
Apr	87	16	..	447	—	..	33	..	583
May	84	8	..	440	—	..	34	..	566
Jun	86	7	..	451	—	..	38	..	582

	NSW	Vic.	Qld	SA	WA(d)	Tas.	NT(e)	ACT	Aust.(f)
REPARATION—FINE OPTION (NUMBER ON FIRST DAY OF MONTH)									
2009	21	1 846	498	581	353	26	3 326
2010	11	2 274	780	489	304	15	3 874
2011	2	1 917	824	582	289	11	3 625
2011									
Jun Qtr	2	1 948	815	545	289	11	3 610
Sep Qtr	2	1 791	830	623	329	11	3 585
Dec Qtr	2	1 828	848	658	332	10	3 677
2012									
Mar Qtr	2	1 598	902	641	196	10	3 349
Jun Qtr	2	1 556	920	659	216	9	3 363
Apr	np	1 519	914	633	209	np	3 287
May	np	1 570	925	646	219	np	3 372
Jun	np	1 579	922	699	221	np	3 430

	NSW	Vic.	Qld	SA	WA(d)	Tas.	NT(e)	ACT	Aust.(f)
REPARATION—COMMUNITY SERVICE (NUMBER ON FIRST DAY OF MONTH)									
2009	4 180	741	1 943	1 146	1 449	584	158	190	10 391
2010	3 836	686	2 236	1 113	1 330	752	124	204	10 280
2011	3 050	623	1 977	1 129	1 085	970	138	206	9 177
2011									
Jun Qtr	3 142	601	2 028	1 151	1 095	942	128	209	9 296
Sep Qtr	2 932	643	1 964	1 131	1 068	994	145	208	9 084
Dec Qtr	2 831	629	1 867	1 085	1 048	1 078	147	203	8 888
2012									
Mar Qtr	2 769	560	1 805	1 006	1 021	1 124	151	193	8 629
Jun Qtr	2 785	583	1 776	947	983	1 166	156	181	8 578
Apr	2 806	552	1 780	939	992	1 139	155	204	8 567
May	2 773	587	1 791	944	984	1 179	156	188	8 602
Jun	2 777	611	1 757	959	974	1 180	157	150	8 565

.. not applicable

— nil or rounded to zero (including null cells)

np not available for publication but included in totals where applicable, unless otherwise indicated

(a) If a person has more than one type of order, they are counted against each order in this table. If a person has more than one order of the same order type, they are counted only once in the order type.

(b) Figures for the quarter and year for first day of the month counts are calculated as a simple average – see Explanatory Notes, paragraph 5.

(c) Figures include persons with breached or suspended orders, with the exception of Vic. and Tas.

(d) Data are subject to processing delays of 4 to 6 weeks – see Explanatory Notes, paragraph 31.

(e) Caution should be exercised as a new processing system was introduced by the NT in September 2009 resulting in significant changes to some community-based order counts. Bail counts were unable to be supplied in December quarter 2009 – see Explanatory Notes, paragraph 33.

(f) See footnotes d–e.

	NSW	Vic.	Qld	SA	WA(d)	Tas.	NT(e)	ACT	Aust.(f)
SUPERVISION (COMPLIANCE)-PAROLE (NUMBER ON FIRST DAY OF MONTH)									
2009	4 286	1 502	4 173	981	1 173	128	80	100	12 423
2010	4 304	1 533	4 256	990	592	117	98	108	11 998
2011	4 366	1 650	4 441	942	445	102	82	106	12 134
2011									
Jun Qtr	4 318	1 636	4 371	940	462	104	85	107	12 024
Sep Qtr	4 321	1 668	4 514	928	434	94	70	106	12 135
Dec Qtr	4 471	1 693	4 552	938	396	94	85	98	12 327
2012									
Mar Qtr	4 458	1 704	4 569	928	390	105	85	96	12 335
Jun Qtr	4 416	1 743	4 707	902	390	117	89	96	12 461
Apr	4 404	1 717	4 658	903	387	112	86	94	12 361
May	4 393	1 741	4 731	902	384	117	87	97	12 452
Jun	4 451	1 770	4 733	902	400	122	93	98	12 569

	NSW	Vic.	Qld	SA	WA(d)	Tas.	NT(e)	ACT	Aust.(f)
SUPERVISION (COMPLIANCE)-BAIL (NUMBER ON FIRST DAY OF MONTH)									
2009	207	829	310	..	na	206	1 568
2010	199	738	304	..	24	251	1 516
2011	191	607	357	..	12	269	1 436
2011									
Jun Qtr	198	627	351	..	14	267	1 457
Sep Qtr	194	593	372	..	14	276	1 449
Dec Qtr	186	557	388	..	7	270	1 409
2012									
Mar Qtr	171	587	374	4	14	270	1 420
Jun Qtr	149	652	403	4	15	271	1 493
Apr	152	636	398	4	18	270	1 478
May	146	655	411	4	11	271	1 498
Jun	148	664	400	4	16	272	1 504

	NSW	Vic.	Qld	SA	WA(d)	Tas.	NT(e)	ACT	Aust.(f)
SUPERVISION (COMPLIANCE)-SENTENCED PROBATION (NUMBER ON FIRST DAY OF MONTH)									
2009	11 073	4 645	9 123	3 185	3 616	735	867	1 139	34 383
2010	9 923	5 032	9 512	3 027	3 620	915	926	1 154	34 108
2011	9 524	5 083	9 265	2 875	3 167	1 021	839	1 086	32 860
2011									
Jun Qtr	9 575	5 058	9 232	2 905	3 208	1 029	799	1 082	32 887
Sep Qtr	9 646	5 088	9 189	2 840	3 114	1 014	835	1 087	32 814
Dec Qtr	9 605	5 112	9 185	2 798	3 031	1 025	853	1 086	32 695
2012									
Mar Qtr	9 624	5 006	9 060	2 675	2 965	1 005	841	1 043	32 220
Jun Qtr	9 855	5 167	9 016	2 570	2 927	1 063	856	982	32 436
Apr	9 875	5 109	9 027	2 594	2 925	1 058	824	997	32 409
May	9 870	5 183	9 031	2 582	2 926	1 064	846	971	32 473
Jun	9 820	5 210	8 990	2 533	2 931	1 067	897	977	32 425

.. not applicable

na not available

- (a) If a person has more than one type of order, they are counted against each order in this table. If a person has more than one order of the same order type, they are counted only once in the order type.
- (b) Figures for the quarter and year for first day of the month counts are calculated as a simple average – see Explanatory Notes, paragraph 5.

(c) Figures include persons with breached or suspended orders, with the exception of Vic. and Tas.

(d) Data are subject to processing delays of 4 to 6 weeks – see Explanatory Notes, paragraph 31.

(e) Caution should be exercised as a new processing system was introduced by the NT in September 2009 resulting in significant changes to some community-based order counts. Bail counts were unable to be supplied in December quarter 2009 – see Explanatory Notes, paragraph 33.

(f) See footnotes d–e.

	NSW	Vic.	Qld	SA	WA(c)(d)	Tas.	NT(e)	ACT	Aust.(f)
ABORIGINAL AND TORRES STRAIT ISLANDER (NUMBER ON FIRST DAY OF MONTH)									
2009	3 169	439	2 823	1 001	1 949	161	860	153	10 555
2010	3 112	512	3 242	1 026	1 687	192	819	149	10 740
2011	3 165	519	3 349	953	1 486	227	797	162	10 658
2011									
Jun Qtr	3 122	516	3 336	953	1 511	217	772	148	10 575
Sep Qtr	3 196	496	3 335	958	1 498	230	800	166	10 678
Dec Qtr	3 261	523	3 363	946	1 489	240	812	175	10 809
2012									
Mar Qtr	3 277	506	3 355	934	1 397	236	808	168	10 681
Jun Qtr	3 329	516	3 434	904	1 408	261	841	158	10 850
Apr	3 317	505	3 411	911	1 411	259	811	163	10 788
May	3 323	521	3 454	903	1 400	262	827	158	10 848
Jun	3 347	521	3 437	897	1 412	262	884	153	10 913
NON-INDIGENOUS (NUMBER ON FIRST DAY OF MONTH)									
2009	13 119	7 220	11 785	4 956	3 626	1 067	258	1 166	43 197
2010	12 235	8 295	12 208	4 651	3 366	1 275	319	1 174	43 523
2011	12 347	8 222	11 891	4 579	2 922	1 469	262	1 227	42 918
2011									
Jun Qtr	12 366	8 188	11 839	4 622	2 964	1 448	244	1 228	42 900
Sep Qtr	12 406	8 200	11 913	4 532	2 879	1 475	259	1 221	42 886
Dec Qtr	12 469	8 206	11 842	4 504	2 804	1 529	276	1 213	42 843
2012									
Mar Qtr	12 447	7 826	11 710	4 437	2 694	1 566	270	1 149	42 099
Jun Qtr	12 570	7 944	11 712	4 370	2 689	1 620	262	1 115	42 283
Apr	12 596	7 830	11 687	4 360	2 674	1 594	256	1 129	42 126
May	12 565	7 967	11 724	4 362	2 696	1 631	262	1 110	42 317
Jun	12 550	8 036	11 725	4 388	2 696	1 635	269	1 106	42 405
UNKNOWN (NUMBER ON FIRST DAY OF MONTH)									
2009	1 849	820	—	64	20	44	1	75	2 873
2010	1 504	441	—	47	10	43	—	119	2 164
2011	670	264	—	60	6	30	—	23	1 054
2011									
Jun Qtr	722	284	—	62	2	35	—	30	1 134
Sep Qtr	614	241	—	67	3	26	—	30	981
Dec Qtr	590	249	—	65	7	27	—	21	959
2012									
Mar Qtr	611	249	—	53	5	31	—	36	984
Jun Qtr	722	279	—	63	4	26	—	18	1 112
Apr	692	267	—	62	2	26	—	13	1 062
May	740	283	—	62	5	25	—	15	1 130
Jun	734	288	—	64	5	27	—	25	1 143

— nil or rounded to zero (including null cells)

- (a) Figures include persons with breached or suspended orders, with the exception of Vic. and Tas.
- (b) Figures for the quarter and year for first day of the month counts are calculated as a simple average – see Explanatory Notes, paragraph 5.
- (c) Data is subject to processing delays of 4 to 6 weeks – see Explanatory Notes, paragraph 31.

- (d) Aboriginal and Torres Strait Islander status is determined using a combination of self-identification, previously collected information and judgement by the recording officer – see Explanatory Notes, paragraphs 26–28.
- (e) Excludes bail data for the December quarter 2009 – see Explanatory Notes, paragraph 33.
- (f) See footnotes c–e.

	NSW	Vic.	Qld	SA	WA(c)(d)	Tas.	NT(e)	ACT	Aust.(f)
PERSONS (NUMBER ON FIRST DAY OF MONTH)									
2009	18 137	8 479	14 608	6 021	5 595	1 272	1 119	1 394	56 625
2010	16 851	9 248	15 451	5 725	5 063	1 510	1 138	1 442	56 426
2011	16 182	9 005	15 240	5 592	4 414	1 726	1 059	1 413	54 630
2011									
Jun Qtr	16 210	8 989	15 175	5 637	4 476	1 700	1 016	1 405	54 609
Sep Qtr	16 215	8 937	15 248	5 558	4 380	1 730	1 059	1 417	54 545
Dec Qtr	16 320	8 978	15 205	5 514	4 300	1 796	1 089	1 409	54 611
2012									
Mar Qtr	16 335	8 581	15 064	5 424	4 096	1 833	1 077	1 353	53 763
Jun Qtr	16 621	8 739	15 146	5 336	4 100	1 907	1 103	1 291	54 244
Apr	16 605	8 602	15 098	5 333	4 087	1 879	1 067	1 305	53 976
May	16 628	8 771	15 178	5 327	4 101	1 918	1 089	1 283	54 295
Jun	16 631	8 845	15 162	5 349	4 113	1 924	1 153	1 284	54 461

- (a) Figures include persons with breached or suspended orders, with the exception of Vic. and Tas.
- (b) Figures for the quarter and year for first day of the month counts are calculated as a simple average – see Explanatory Notes, paragraph 5.
- (c) Data is subject to processing delays of 4 to 6 weeks – see Explanatory Notes, paragraph 31.
- (d) Aboriginal and Torres Strait Islander status is determined using a combination of self-identification, previously collected information and judgement by the recording officer – see Explanatory Notes, paragraphs 26–28.
- (e) Excludes bail data for the December quarter 2009 – see Explanatory Notes, paragraph 33.
- (f) See footnotes c–e.

PROPORTION OF PERSONS IN COMMUNITY-BASED CORRECTIONS(a)(b), By Aboriginal and Torres Strait Islander status

	NSW	Vic.	Qld	SA	WA(c)(d)	Tas.	NT(e)	ACT	Aust.(f)
ABORIGINAL AND TORRES STRAIT ISLANDER (%)									
2009	17.5	5.2	19.3	16.6	34.8	12.7	76.8	11.0	18.6
2010	18.5	5.5	21.0	17.9	33.3	12.7	72.0	10.3	19.0
2011	19.6	5.8	22.0	17.0	33.7	13.1	75.2	11.5	19.5
2011									
Jun Qtr	19.3	5.7	22.0	16.9	33.7	12.8	76.0	10.5	19.4
Sep Qtr	19.7	5.5	21.9	17.2	34.2	13.3	75.5	11.7	19.6
Dec Qtr	20.0	5.8	22.1	17.1	34.6	13.4	74.6	12.4	19.8
2012									
Mar Qtr	20.1	5.9	22.3	17.2	34.1	12.9	75.0	12.4	19.9
Jun Qtr	20.0	5.9	22.7	16.9	34.3	13.7	76.2	12.2	20.0
Apr	20.0	5.9	22.6	17.1	34.5	13.8	76.0	12.5	20.0
May	20.0	5.9	22.8	17.0	34.1	13.7	75.9	12.3	20.0
Jun	20.1	5.9	22.7	16.8	34.3	13.6	76.7	11.9	20.0
NON-INDIGENOUS (%)									
2009	72.3	85.2	80.7	82.3	64.8	83.9	23.1	83.7	76.3
2010	72.6	89.7	79.0	81.3	66.5	84.4	28.0	81.4	77.1
2011	76.3	91.3	78.0	81.9	66.2	85.1	24.8	86.9	78.6
2011									
Jun Qtr	76.3	91.1	78.0	82.0	66.2	85.2	24.0	87.4	78.6
Sep Qtr	76.5	91.8	78.1	81.6	65.7	85.2	24.5	86.1	78.6
Dec Qtr	76.4	91.4	77.9	81.7	65.2	85.1	25.4	86.1	78.5
2012									
Mar Qtr	76.2	91.2	77.7	81.8	65.8	85.5	25.0	84.9	78.3
Jun Qtr	75.6	90.9	77.3	81.9	65.6	85.0	23.8	86.4	77.9
Apr	75.9	91.0	77.4	81.8	65.4	84.8	24.0	86.5	78.0
May	75.6	90.8	77.2	81.9	65.7	85.0	24.1	86.5	77.9
Jun	75.5	90.9	77.3	82.0	65.5	85.0	23.3	86.1	77.9
UNKNOWN (%)									
2009	10.2	9.7	—	1.1	0.4	3.4	0.1	5.3	5.1
2010	8.9	4.8	—	0.8	0.2	2.9	—	8.2	3.8
2011	4.1	2.9	—	1.1	0.1	1.8	—	1.7	1.9
2011									
Jun Qtr	4.5	3.2	—	1.1	—	2.0	—	2.1	2.1
Sep Qtr	3.8	2.7	—	1.2	0.1	1.5	—	2.1	1.8
Dec Qtr	3.6	2.8	—	1.2	0.2	1.5	—	1.5	1.8
2012									
Mar Qtr	3.7	2.9	—	1.0	0.1	1.7	—	2.7	1.8
Jun Qtr	4.3	3.2	—	1.2	0.1	1.4	—	1.4	2.0
Apr	4.2	3.1	—	1.2	—	1.4	—	1.0	2.0
May	4.5	3.2	—	1.2	0.1	1.3	—	1.2	2.1
Jun	4.4	3.3	—	1.2	0.1	1.4	—	1.9	2.1

— nil or rounded to zero (including null cells)

- (a) With the exception of Vic. and Tas., includes persons with breached or suspended orders.
- (b) Figures for the quarter and year for first day of the month counts are calculated as a simple average – see Explanatory Notes, paragraph 5.
- (c) Data is subject to processing delays of 4 to 6 weeks – see Explanatory Notes, paragraph 31.

- (d) Aboriginal and Torres Strait Islander status is determined using a combination of self-identification, previously collected information and judgement by the recording officer – see Explanatory Notes, paragraphs 26–28.
- (e) Excludes bail orders for the December quarter 2009 – see Explanatory Notes, paragraph 33.
- (f) See footnotes c–e.

EXPLANATORY NOTES

INTRODUCTION

1 This publication presents statistical series about persons either held in adult corrective services custody or who are serving adult community-based orders in Australia. It contains data on the number of persons in custody by sex, Aboriginal and Torres Strait Islander status, type of custody, legal status and sentence type; the number of sentenced persons received into corrective services custody each month; the number of federal prisoners; and data about the number of persons in community-based corrections by sex, Aboriginal and Torres Strait Islander status and type of order.

2 Statistics presented in this publication are compiled in three ways:

- Average daily prisoner population: Counts taken on each day of the month are summed and divided by the number of days in that month to determine the average daily prisoner population for that month. The average daily periodic detainee population is a count of persons on periodic detention on each day a centre is open, divided by the number of days a centre is open.
- Sentenced prisoner reception figures: Counts are provided each month on the number of receptions where a prisoner is received as a sentenced prisoner. This includes prisoners with a change of legal status from unsentenced to sentenced.
- First day of the month prisoner population: Counts of prisoners and persons serving community-based corrections orders, taken on or near the first day of the month (see paragraphs 4 and 5).

3 Although national standards and classifications are used in the compilation of these statistics, some discrepancies remain between the states and territories. These are due to legislative and procedural differences between jurisdictions and the way that these differences are reflected in agencies' administrative data systems. As part of its quality assurance strategy, the ABS is working with corrective services agencies to minimise the effect of these differences.

REFERENCE PERIOD

4 The reference period for average daily prisoner population statistics and sentenced reception counts is the complete reference month. The reference date for all other figures is the first day of the reference month. However, not all states and territories report strictly according to this 'first day of the month' rule:

- The Western Australian and Australian Capital Territory prisoners in New South Wales prisons populations are counted as at midnight on the last day of the month. In these cases the figures provided are taken to represent the prison population at the beginning of the following month.

5 Calculation of figures for the entire quarter and entire year varies depending on the counting unit and method of counting prisoners:

- Average daily figures: Figures are calculated by weighting the average according to the number of days in each month, quarter or year.
- First day of the month: Figures are simple averages. For quarterly figures, the sum of the monthly data is divided by three; for yearly figures, the figures for each month are added and the total divided by twelve.
- Sentenced receptions: Figures are totals of each month.
- These figures may be subject to rounding.

SCOPE

6 The scope of the statistics in this publication includes all persons remanded or sentenced to adult custodial facilities (including Work Camps and Community Custody Centres in Queensland), or who are serving adult community-based orders in each state and territory in Australia.

EXPLANATORY NOTES *continued*

SCOPE *continued*

7 Counts of prisoners in the following custodial facilities are included in the collection:

- gazetted prisons in all jurisdictions;
- periodic detention centres in New South Wales and the Australian Capital Territory;
- community custody centres and work camps in Queensland;
- cells in court complexes administered by corrective services in New South Wales;
- transitional centres in New South Wales; and
- lock-ups in Western Australia operated by the police but designated as a prison by the Chief Executive Officer of Corrective Services.

8 The prisons and community-based corrections collection excludes the following custodial facilities:

- police lockups, police prisons and cells in court complexes not administered and controlled by corrective services;
- gazetted police prisons in the Northern Territory;
- juvenile detention centres, including those under the authority of adult corrective services;
- immigration detention centres; and
- military prisons.

9 This collection includes counts of persons remanded or sentenced to adult custody facilities, or directed to serve community-based orders administered by adult corrective services agencies. In all states and territories except Queensland, persons are considered adults if aged 18 years and over. In Queensland persons are considered adults if aged 17 years and over. The vast majority of persons counted in the collection are adults. However, juveniles may be included in exceptional circumstances.

10 Since December 2004, the Kariong Juvenile Correctional Centre in New South Wales has operated under the authority of adult corrective services. The population at Kariong Juvenile Correctional Centre may include adult persons as well as juveniles. New South Wales includes juveniles based in Kariong in this collection, however, this facility accounts for less than 0.5% of the New South Wales prisoner population.

11 Federal prisoners include those persons charged and sentenced under a Commonwealth statute, and those persons who are charged and sentenced under the laws of another country but transferred to an Australian prison to serve their sentence under the *International Transfer of Prisoners Act 1997* (Cwlth). To give practical effect to this legislation in Australia, the framework was introduced in January 2003. For the purposes of this publication, federal sentenced prisoners are those persons who are recognised by the Criminal Law Division of the Australian Government Attorney-General's Department as having been charged and sentenced under a Commonwealth statute, or transferred from another country to serve their sentence in Australia.

12 With the exception of Victoria and Tasmania, community-based corrections includes those persons with breached or suspended orders.

DATA SOURCE

13 Statistics in this publication are derived from information provided to the ABS from administrative records held by corrective services agencies within each state and territory. Statistics on federal prisoners are derived from records kept by the Criminal Law Division of the Australian Government Attorney-General's Department.

COUNTING RULES

14 Statistics for persons held in custody are presented by the state or territory in which they were held, however, this may not be the same as the original sentencing jurisdiction. The only exception to this are data for federal sentenced prisoners. These are presented by the state or territory in which they were sentenced, not where they were held in custody.

EXPLANATORY NOTES *continued*

COUNTING RULES *continued*

15 Sentenced prisoners who have other offences that are unsentenced are counted as sentenced. Prisoners may be unsentenced because they are awaiting the outcome of their trial, convicted but awaiting sentence, or awaiting deportation.

16 If an offender has two or more different types of community-based orders operating simultaneously, then each order will be counted. If two or more community-based orders are of the same type, these orders together will only be counted as one order.

RATES

17 Imprisonment and community-based corrections rates enable comparisons of prisoner numbers to be made across states and territories. Prisoner and community-based corrections rates are expressed per 100,000 adult population. Imprisonment rates are calculated based on two different counting concepts (average daily and first day of the month), as a result there may be variations in imprisonment rates presented in this publication.

18 In this publication the population figures used in the calculation of rates are for persons aged 18 years and over for all states and territories except Queensland where the population is persons aged 17 years and over (see paragraph 9).

19 Rates for the total adult prisoner population and persons in community-based corrections are calculated using the estimated resident population (ERP) for each of the states and territories. All estimates for the Australian Capital Territory exclude Jervis Bay Territory. All estimates for Australia exclude the external territories of Christmas Island and the Cocos (Keeling) Island. As the population changes over time the denominator used for the calculation of rates varies, depending on the reference period. The most current ERP data available at the time of publication are used to calculate rates as follows:

- for the March quarter, ERP is from the previous September quarter;
- for the June quarter, ERP is from the previous December quarter;
- for the September quarter, ERP is from the previous March quarter;
- for the December quarter, ERP is from the previous June quarter; and
- annual rates are an average of the rates of the contributing quarters.

20 The ERP series are revised every five years to incorporate additional information available from the latest Census of Population and Housing. The rates per 100,000 adult persons presented in this issue have been calculated using different ERP counts as follows:

- Rates from the June 2007 quarter (excluding Aboriginal and Torres Strait Islander rates) are calculated using rebased data from the intercensal period (2001-2006) sourced from the 2006 Census of Population and Housing;
- All other rates (excluding Aboriginal and Torres Strait Islander rates) are calculated using ERP data based on the 2001 Census of Population and Housing.

21 For population estimates and information on the methodology used to produce the ERP, see *Australian Demographic Statistics* (cat. no. 3101.0).

Aboriginal and Torres Strait Islander imprisonment rates

22 Rates for the Aboriginal and Torres Strait Islander adult population are calculated using rebased estimates (for the period 1986 - 2006) and projections (2007 - 2021) of the Aboriginal and Torres Strait Islander population. These data are based on data from the 2006 Census of Population and Housing and use assumptions about future fertility, paternity, life expectancy at birth and migration. For more information see *Experimental Estimates and Projections, Aboriginal and Torres Strait Islander Australians, 1991 to 2021* (cat. no. 3238.0).

EXPLANATORY NOTES *continued*

*Aboriginal and Torres Strait
Islander imprisonment rates
continued*

23 The projections used in this publication are based on Series B projections for 30 June of the relevant calendar year. Series B is one of two main projection series (Series A and B) that have been published for the years 2007 to 2021. Both of these series assume an annual decline of 0.5% in fertility rates; an annual increase of 1% in paternity rates; constant interstate migration at levels observed in the 2006 Census; and zero net overseas migration with no arrivals and no departures. Further, two different assumptions were made about future Aboriginal and Torres Strait Islander life expectancy at birth for Australia:

- In Series A, Aboriginal and Torres Strait Islander life expectancy at birth will remain constant; and
- In Series B, Aboriginal and Torres Strait Islander life expectancy at birth will increase by 0.3 years per year for both males and females.

24 The impact of re-basing Aboriginal and Torres Strait Islander imprisonment rate data using Series B projections, instead of the previous "low series" of projections, is minimal at the national level. Differences of no greater than 5% are seen in the state and territory data, and generally the result has been a decrease in the imprisonment rate. This is because the assumptions used by Series B result in higher population estimates and projections than those through the use of the previous "low series".

25 The decision to use Series B as the denominator in the calculation of Aboriginal and Torres Strait Islander imprisonment rates followed consultation with the National Corrective Services Statistics Advisory Group and other stakeholders.

ABORIGINAL AND TORRES
STRAIT ISLANDER
IDENTIFICATION

26 The ABS conducts an ongoing programme of quality assurance to monitor and improve the quality of Aboriginal and Torres Strait Islander Status data in Corrective Services agencies (both custodial and community-based corrections). Whilst the ABS has published Aboriginal and Torres Strait Islander status data in Corrective Services collections for a number of years, ongoing quality assurance enables better understanding of accuracy over time.

27 The quality of the Aboriginal and Torres Strait Islander status information collected and recorded in Corrective Service agencies is assessed against the ABS Standard Indigenous Question (SIQ). The SIQ is based upon self-identification by the individual who comes into contact with Corrective Service agencies. In 2010, the ABS conducted a comprehensive quality assurance review across all jurisdictions and sectors of the criminal justice system to confirm our understanding of the processes involved in recording Aboriginal and Torres Strait Islander status and the barriers to producing quality statistics. The results of the review concluded that corrective services data are of acceptable quality and comparability for all states and territories, with the exception of Western Australia. In Western Australia, Aboriginal and Torres Strait Islander status is determined by asking two questions rather than asking the ABS SIQ at the first meeting. This is at the discretion of the case manager and in some instances Aboriginal and Torres Strait Islander status may be recorded from information previously collected or otherwise determined by the case manager. For this reason, caution should be exercised when comparing Aboriginal and Torres Strait Islander data from Western Australia to other states and territories.

28 Some persons in custody are recorded with an unknown Aboriginal and Torres Strait Islander status on the information systems of corrective agencies as their status has not been able to be obtained or recorded. Persons with Aboriginal and Torres Strait Islander status unknown are excluded from tables 13–16. Counts of persons with an unknown Aboriginal and Torres Strait Islander status are included in all other tables. Unknowns account for just over 2% of all records.

EXPLANATORY NOTES *continued*

SIGNIFICANT EVENTS

Victoria

29 Home detention was abolished in Victoria on 16 January 2012. On this date the *Sentencing Legislation Amendment (Abolition of Home Detention) Act 2011* came into effect. As a result, home detention is no longer a sentencing option and can also no longer be given as a pre-parole option by the Adult Parole Board, as was the case previously. Any existing home detention orders issued before 16 January 2012 will continue to run until completed.

Western Australia

30 Prior to the September quarter 2009, Western Australian data on type of custody are not comparable. Data prior to this period were based on a prisoner's security rating rather than the rating of the prison (see Glossary). As a result, prisoners with a minimum security rating and located in a medium or maximum security prison were classified as open custody. Data for prisoners in secure custody are understated, whilst data for persons in open custody are overstated prior to September quarter 2009.

31 Data for community-based correction orders extracted from the Western Australian information system are subject to data processing time lags of 4-6 weeks. Fine option orders are most likely to be impacted by the lag, with approximately 10% of each month's data entry delayed.

Tasmania

32 Orders under the Court Mandated Diversion for Drug Offenders (CMD) returned to Community Corrections supervision in July 2010 and have been included in the electronic data from January 2012 onwards. Drug Treatment Orders are counted under Sentenced Probation, and CMD Bail Orders under Bail.

Northern Territory

33 In September 2009 a new offender management system was implemented - the Integrated Offender Management System (IOMS). The transition to the new system resulted in a number of data impacts, and as such caution should be exercised in comparing current data with that prior to December 2009. The impacts included:

- significantly increased counts, and potential over counting, for sentenced receptions and some community-based orders following the introduction of the system,
- overstated community-based orders for the period from December quarter 2009 to September quarter 2010 (due to difficulties in identifying persons who have been in breach for 3 years or more), and
- bail counts for December quarter 2009 were also unable to be supplied, impacting the territory totals for community-based orders and to a lesser extent on the Australian total.

34 In March 2012 the Northern Territory introduced two new sentencing options, the Community Custody Order for non-violent and non-sexual offenders facing an imprisonment period of less than 12 months, and the Community-based Order for non-violent offenders and non-sexual offenders not facing an imprisonment period. These orders are both counted under Sentenced Probation and are included in the data from the June quarter 2012.

Australian Capital Territory

35 Between 2000 and March quarter 2009, persons sentenced to full-time custody by the Australian Capital Territory were usually held in New South Wales prisons as the Australian Capital Territory only had two remand centres for unsentenced prisoners and a periodic detention centre. From the June quarter 2009 all sentenced prisoner receptions were detained within the Australian Capital Territory. For this same period nearly all ACT prisoners held in New South Wales prisons were transferred to a new custodial facility (Alexander Maconochie Centre) which commenced taking prisoners in March 2009. From the September quarter 2009, all ACT prisoners are held within the ACT.

EXPLANATORY NOTES *continued*

*Australian Capital Territory
continued*

36 A backlog of prisoners sentenced in the ACT awaiting transfer to NSW remained in the ACT during the transition of the opening of the new ACT prison. These sentenced prisoners were classified as 'unsentenced' prior to the December quarter 2009. With the opening of the new prison, sentenced reception counts better reflect accurate recording of sentenced and unsentenced prisoners, resulting in an increase in sentenced prisoner receptions from the September quarter 2009.

37 Figures relating to prisoners from the ACT held in NSW prior to September quarter 2009 are presented in this publication in both the ACT prisoner counts and the NSW prisoner counts.

38 Imprisonment rate data for the Australian Capital Territory are calculated on the basis of the total number of Australian Capital Territory prisoners (i.e. Australian Capital Territory prisoners that were held in New South Wales prisons, prior to September quarter 2009, and Australian Capital Territory prisoners held in the Australian Capital Territory) divided by the estimated resident Australian Capital Territory adult population and multiplied by 100,000. For New South Wales, the imprisonment rate is based on the count of New South Wales prisoners, excluding Australian Capital Territory prisoners held in New South Wales prisons prior to September quarter 2009, divided by the estimated resident New South Wales adult population and multiplied by 100,000. Time series data have also been derived on this basis.

RELATED PUBLICATIONS

ABS Publications

- 39** Other ABS publications that may be of interest include:
- Australian Demographic Statistics* (cat. no. 3101.0) – issued quarterly
 - Australian Social Trends* (cat. no. 4102.0) – issued quarterly
 - Australian and New Zealand Standard Offence Classification (third edition)* (cat. no. 1234.0) – released 2 June 2011
 - Crime Victimisation, Australia* (cat. no. 4530.0) – issued annually
 - Criminal Courts, Australia* (cat. no. 4513.0) – issued annually
 - Directory of Family and Domestic Violence Statistics, 2011* (cat. no. 4533.0) – released 22 November 2011
 - Experimental Estimates and Projections, Aboriginal and Torres Strait Islander Australians, 1991 to 2021* (cat. no. 3238.0) – released 8 September 2009
 - Federal Defendants, Selected States and Territories*, (cat. no. 4515.0) – issued annually
 - General Social Survey: Summary Results, Australia* (cat. no. 4159.0) – irregular
 - In Focus: Crime and Justice Statistics* (cat. no. 4524.0) – irregular
 - Information Paper: Measuring Crime Victimisation, Australia: The Impact of Different Collection Methodologies* (cat. no. 4522.0.55.001) – single issue
 - Information Paper: National Criminal Justice Statistical Framework* (cat. no. 4525.0) – single issue
 - Information Paper: National Information Development Plan for Crime and Justice Statistics 2005* (cat. no. 4520.0) – single issue
 - Measures of Australia's Progress* (cat. no. 1370.0) – released 15 September 2010
 - Measuring Victims of Crime: A Guide to using Administrative and Survey data* (cat. no. 4500.0.55.001) – single issue
 - Personal Fraud Survey* (cat. no. 4528.0) – released 19 April 2012
 - Personal Safety Survey* (cat. no. 4906.0) – released 21 August 2006
 - Prisoners in Australia* (cat. no. 4517.0) – issued annually
 - Recorded Crime – Victims, Australia* (cat. no. 4510.0) – issued annually
 - Recorded Crime – Offenders, Selected states and territories* (cat. no. 4519.0) – issued annually
 - Sexual Assault in Australia: A Statistical Overview* (cat. no. 4523.0) – single issue

EXPLANATORY NOTES *continued*

ABS Publications continued

40 Current publications and other products released by the ABS are available from the ABS website <<http://www.abs.gov.au>>. The ABS also issues a daily Release Advice on the website that details products to be released in the week ahead. The National Centre for Crime and Justice Statistics releases *Crime and Justice News* (cat. no. 4500.0), an annual newsletter that is published on the ABS website. The Centre can be contacted by email through <crime.justice@abs.gov.au>.

Non-ABS Publications

41 Non-ABS sources that may be of interest include:

- Australian Institute of Criminology, *List of Publications* – irregular
<<http://www.aic.gov.au>>
- Crime Research Centre, University of Western Australia, *Crime and Justice Statistics for Western Australia* – issued annually
<<http://www.crc.law.uwa.edu.au>>
- Department of Corrective Services, New South Wales, *NSW Inmate Census* – irregular
<<http://www.dcs.nsw.gov.au>>
- Department of Justice, Northern Territory, *Northern Territory Quarterly Crime and Justice Statistics* – issued quarterly
<<http://www.nt.gov.au/justice/>>
- Department of Justice, Victoria, *Statistical Profile of the Victorian Prison System* – issued annually
<<http://www.justice.vic.gov.au>>
- NSW Bureau of Crime Statistics and Research, *New South Wales Criminal Courts Statistics* – issued annually
<<http://www.lawlink.nsw.gov.au>>
- Office of Crime Statistics and Research, *South Australia, Crime and Justice in South Australia* – issued annually
<<http://www.ocsar.sa.gov.au>>
- Steering Committee for the Review of Commonwealth/State Service Provision, *Report on Government Services* – issued annually
<<http://www.pc.gov.au>>

GLOSSARY

Aboriginal and Torres Strait Islander prisoner	A prisoner who self-identifies as being of Aboriginal or Torres Strait Islander origin, or both.
Bail	This is generally a pre-sentence option where a person is released into the community for a period before they appear in court for trial or final sentencing. Bail orders can require a financial surety to be lodged with the court, and a number of conditions including supervision and residential requirements designed to ensure the re-appearance of the person at court. Bail counts are available only in states and territories where bail orders are supervised by corrective services. Bail is a sub-category of Supervision where the person is under the supervision of corrective services (<i>see</i> Supervision).
Community-based corrections	This refers to the community-based management of court-ordered sanctions, post-prison administrative arrangements and fine conversions, which principally involve the provision of one or more of the following activities: supervision, programs or community work.
Community service	This category of community-based corrections orders includes sentencing options requiring offenders to undertake a specified number of hours of unpaid, supervised work to benefit the community on an approved project. Community service is a sub-category of Reparation (<i>see</i> Reparation).
Corrective services custody	Confinement in a place intended primarily for the purpose of confining prisoners, such as a prison, prison farm, Periodic Detention Centre or Community Custody Centre.
Federal sentenced prisoner	Persons charged and sentenced under a Commonwealth statute or transferred from another country to serve their sentence in Australia.
Fine option	A community-based sentence type where the offender is serving a sentence for default of a fine. In most jurisdictions this order type requires an offender to complete community service as a reparatory act. Fine option is a sub-category of Reparation (<i>see</i> Reparation).
Full-time prison custody	A type of custody where a prisoner is required to be held in custody on a full-time basis. This includes prisons, Queensland Community Custody Centres and work outreach camps. Full-time prison custody excludes periodic detention (<i>see</i> Periodic detention).
Home detention	(<i>see</i> Restricted movement)
Legal status	A person may be either sentenced or unsentenced depending on the warrant(s) or court order(s) that provide the legal basis for the administration of the person through the criminal justice system.
Non-Indigenous	A prisoner who does not identify as being of Aboriginal and/or Torres Strait Islander origin.
Open custody	Refers to prisoners housed in minimum security custodial facilities that do not require them to be confined by a secure perimeter physical barrier, irrespective of whether a physical barrier exists.
Parole	A parole order is made following a period of imprisonment and requires an offender to be subject to supervision in the community. Additional conditions may also be applied such as programs, counselling or drug testing. Parole is a sub-category of Supervision (<i>see</i> Supervision).
Periodic detention	A type of custody or order where a sentenced prisoner is required to be held in custody on a part-time basis. Currently this consists of two consecutive days in a one-week period, while remaining at liberty during the rest of the week.
Prisoner	A person held in custody. For the purposes of this collection, prisoners are those whose confinement is the responsibility of a corrective services agency.
Remand	(<i>see</i> Unsentenced)

GLOSSARY *continued*

Reparation	Reparation refers to all offenders with an order that requires them to undertake unpaid, justice agency-approved community service work.
Restricted movement	This refers to persons who are subject to a system of restricted movement, including supervision and/or electronic monitoring. This category includes home detention that may restrict residence to a nominated place. Restricted movement can be either a pre-sentence or post-sentence order.
Secure custody	Refers to prisoners housed in medium or maximum security custodial facilities requiring them to be confined by a secure physical barrier.
Sentenced	A legal status indicating that a person has received a custodial or community-based order from a court in response to a conviction for an offence.
Sentenced prisoner reception	Refers to entry into corrective services custody from the community, having received a sentence of imprisonment as an outcome of a court proceeding; or persons who are sentenced to custody while in custody on remand (i.e. changed status from a remand to a sentenced prisoner); or persons entering custody as a result of defaulting on the payment of a fine. Sentenced prisoners in custody who receive a further sentence of imprisonment are not counted as sentenced receptions.
Sentenced probation	A supervision order made following an original sentence handed down in court following conviction. A probation order generally requires 'good behaviour' and compliance with the directions of supervisors. The order may also require compliance with conditions such as program attendance and residential requirements.
Supervision (compliance)	This includes community-based orders other than those categorised as restricted movement or reparation (e.g. parole, bail and sentenced probation).
Unsentenced	A legal status indicating that a person is confined to custody or supervision while awaiting the outcome of their trial.

FOR MORE INFORMATION . . .

INTERNET **www.abs.gov.au** the ABS website is the best place for data from our publications and information about the ABS.

INFORMATION AND REFERRAL SERVICE

Our consultants can help you access the full range of information published by the ABS that is available free of charge from our website. Information tailored to your needs can also be requested as a 'user pays' service. Specialists are on hand to help you with analytical or methodological advice.

PHONE 1300 135 070

EMAIL client.services@abs.gov.au

FAX 1300 135 211

POST Client Services, ABS, GPO Box 796, Sydney NSW 2001

FREE ACCESS TO STATISTICS

All statistics on the ABS website can be downloaded free of charge.

WEB ADDRESS www.abs.gov.au